

# steel CONSTRUCTION

Volume 37 No. 5 2013

MAIN SPONSOR



STEEL AWARDS 2013  
Winners and Entries



OFFICIAL JOURNAL OF THE SOUTHERN AFRICAN INSTITUTE OF STEEL CONSTRUCTION



Dr Hennie de Clercq, Retiring CEO, SAISC.

## SAISC COMMENT

*So let me just say that it has been a pleasure (at least, most of the time)*

*to write the Comment for Steel Construction. It allowed me to write about things that exercised my mind, and to do it in my style. I often wondered whether anybody read a word I wrote but never yielded to the temptation to cite perceived lack of readership as an excuse for not taking trouble.*

### STEEL AWARDS MARKS CHANGE AT THE INSTITUTE

Steel Awards is the highlight of the annual activities of the SAISC and the largest steel industry function held each year in South Africa. In fact, in the world there are few steel industry events that can compete with it in terms of size, glamour and prestige. So if one wants to go out from the Institute with a bang you can do worse than letting your departure coincide with Steel Awards.

This is the last time I will write a Comment for this journal, having written more than 50 of them over a period of just over 13 years, and it is rather a daunting thing: what does one say that will make an indelible impression while compressing huge wisdom and insight gained over all the time at the helm of the Institute, and great visions as to where the Institute should go into a few paragraphs? Well, you do the logical thing: chicken out, because such a piece would be too difficult to write and the chances of making an indelible impression are small, unless I succeed in making an absolutely colossal fool of myself. (It's the Second Law of Thermodynamics, you see: it's easier to break down than to build up, it's easier to become well known as a criminal than as an engineer, it's easier to commit a memorable howler, entropy tends to increase.)

So let me just say that it has been a pleasure (at least, most of the time) to write the Comment for Steel Construction. It allowed me to write about things that exercised my mind, and to do it in my style. I often wondered whether anybody read a word I wrote but never yielded to the temptation to cite perceived lack of readership as an excuse for not taking trouble. And then I would bump into somebody who commented on something I wrote and be thankful for having taken trouble.

If you are reading this, there's a chance you are 'one of my loyal readers' and I want to thank you profusely. I needed you.

I am very excited about my successor as CEO of the Institute. Paolo Trincherio (the people of Italian descent pronounce 'ch' as 'k', in case you don't know) is the person I have eyed for years, closely watching his development and behaviour and hoping that he would end up succeeding me. Companies and organisations the world over are fickle and even fragile things – even the strongest can be damaged and even killed by poor leadership. With Paolo at the helm I am happy that the Institute is in safe hands.

He has been involved in the steel industry for just under 25 years, starting in 1988 as a young Dorbyl Structural Engineering bursary student. He got a BSc in civil engineering from the University of the Witwatersrand went on to complete a Masters under Professor Alan Kemp, the person we can thank for introducing Paolo to the workings of the SAISC on the Steel Design Code Committee. After spending some additional time at the university as a lecturer he moved to the SAISC as Development Engineer and Technology Director, part of which with me as Executive Director.

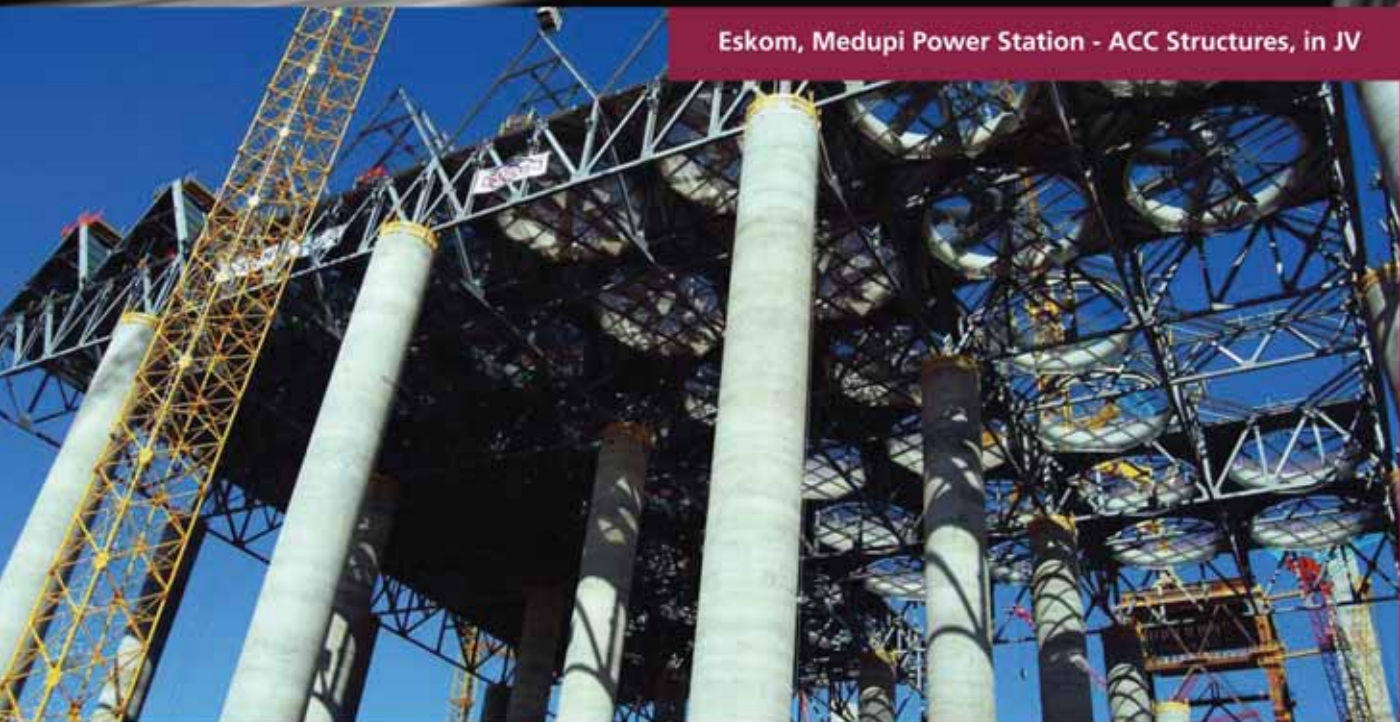
It was always clear, however, that Paolo had to leave the Institute to get experience in business and industry, so he left when he was offered an





STEEL CONSTRUCTION AND ENGINEERING

Eskom, Medupi Power Station - ACC Structures, in JV



Established in 1987, Cadcon, as a vibrant and reputable entity, has grown into a leading steel construction, designing and engineering organization involved in major projects in and around Southern Africa and internationally. Cadcon operates from their 15 400 m<sup>2</sup> workshop and office facilities in Centurion, Pretoria, housing state of the art machinery and latest technology CNC plate, beam, angle, cutting, drill and saw facilities serviced by 20 overhead cranes. Cadcon has also implemented the FabTrol System providing drawing management, material nesting, purchasing, inventory control, production and CNC management, shipping and more.



Eskom, Medupi Ducting Supports, Lephalale

Planning and completion of various significant and complex national and international projects on time, for commercial, industrial, mining and plant sectors, serves as testimony putting Cadcon as a leader at the cutting edge, in a rapidly growing and competitive environment. Cadcon has valuable experience in exports of steel products internationally and strong innovative contributions to the whole of Southern Africa.



Overall Winner SAISC Steel Awards 2011  
Sandton City - Protea Court Rooflight, in JV

Furthermore, Cadcon's unique packages include the design and supply of buildings through Mitect, Cadcon's in-house engineering design department. Additional services include crane, truck and trailer hire.

Cadcon operates their full production process from the delivery of raw material, fabrication, abrasive blasting, corrosion protection, erection and finishing to the proud delivery of the final product through their team of graduates and dedicated artisans. Cadcon's methodologies and processes results in their ability to provide their clients with turnkey solutions at optimum efficiency; **STRIVING FOR EXCELLENCE AND PEACE OF MIND IN STEEL CONSTRUCTION**, this being the cornerstone of Cadcon's success and competency.



1027 Ergon Street • Lyttelton • Ext. 6 • 0157 • Box 35042 • Menlo Park • 0102

Tel: 012 664 6134/40/43/77 • Fax: 012 664 6166 • E-mail: richbutler@cadcon.co.za • www.cadcon.co.za

Striving for Excellence and Peace of Mind in Steel Construction



## SAISC COMMENT




Paolo Trincherio, New CEO of the SAISC.

opportunity at Macsteel to start up the cellular beam division as Engineering Manager. His almost eleven year journey at Macsteel saw him becoming Long Product Director at Macsteel Trading Germiston South, National Steel Product Director at Macsteel Trading Head Office and ultimately, Group Business Development and Technical Director at Macsteel Corporate Services.

But throughout his time at Macsteel Paolo maintained an involvement with the Institute and served on various committees. He ended up being a member of our Council and our Board, and as Treasurer of the SAISC. I am sure he maintained a relationship with the Institute because he is passionate about the design of steel structures and has remained active in research and product development. But I also think that, like me during the 20 years I spent as a consulting engineer between my two stints at the Institute, he must have been thinking about this job as a place where you can really give expression to your whole range of aptitudes, ideals and passions.

We constantly try to keep Steel Awards fresh and exciting. And we do the same for the Institute. I am confident that with Paolo at the helm we will continually be surprised on the upside.

Goodbye, and thanks again. Thanks, in this space, especially to Renée Pretorius, Editor of Steel Construction and one of the most creative people I have ever met. And to Spencer Erling, who ensures that the competition and production leading to Steel Awards can be called 'highly professional'. Marlé Lötter ensures that the Steel Awards functions are planned to every imaginative detail. Profound thanks to many others. Thanks to the Lord. 

*Hennie*



## The hard facts

Stewarts & Lloyds supply a comprehensive range of: flat bar / angles / channels / columns / beams / joists / IPE sections and window sections / round and square bar / rails / plates / sheeting / open sections / grating / handrails / expanded metal / round, square and rectangular tube / palisades / wire fence and reinforcing mesh. And all this cut, profiled, bent, bevelled, guillotined and rolled to your exact requirements.



**STEEL & TUBE • PIPES & FITTINGS • VALVES • PUMPS • IRRIGATION • FENCING • PROFILING & LASER PRODUCTS**

Customer Care: 0860 10 27 99 | [www.stewartsandlloyds.co.za](http://www.stewartsandlloyds.co.za) | [info@sltrading.co.za](mailto:info@sltrading.co.za)

## STEEL AWARDS 2013

# THE JUDGES OF STEEL AWARDS 2013

The final meeting of Steel Awards 2013's adjudication felt more like an intense court case than anything else, with each judge stating his or her case. The winners had to come forward without a shadow of a doubt – it was a tough one!

But this experienced group of judges did not let us down and we would like to thank them for their dedication and commitment, early mornings, late evenings, great sense of humour and wonderful company through-out the whole adjudication phase of Steel Awards 2013. The judging process was organised and managed by the Institute's duo Reneé Pretorius and Spencer Erling.

We asked each of the judges to comment on their experience of the judging this year.

*"I love to hear the the team's enthusiasm for their project – from the architect, engineer and owner to the hardened fabricator. Makes the trip through-out the country worthwhile, even getting up at 4:30 am, in the very often, cool morning."*

Franco Mordini – Association of Steel Tube and Pipe Manufacturers of South Africa (ASTPM)

*"Being part of the judging panel is a remarkable experience as the sole architect on the panel. It is interesting to understand how the technical aspects of a submission are viewed. I believe Steel Awards is a fantastic example of how the SAISC supports industry by seeking out and exposing innovative and good design and construction."*

Heather Dodd – South African Institute of Architects (SAIA)

*"My judging experience this year was fun. Standing in awe with regards to most of the projects – ranging from unlimited budgets to ingenuity and creativeness. Once again appreciating the versatility of steel!"*

Johann Nel – South African Iron and Steel Institute (SAISI)

*"I see Steel Awards judging as part of my professional development and although I have an extremely busy schedule I make time for it – it is worth it."*

John Truter – Consulting Engineers South Africa (CESA)

*"I thoroughly enjoy the Steel Awards judging, it brings me up to speed on an industry I spent most of my life in. It is fascinating to see projects where great imagination has been used in the use of steel and to note that over the years steel is becoming more accepted by the wider construction industry."*

Louis Breckenridge – Constructional Engineering Association (CEA)

*"This year was as every year – an education in four short weeks. The only difference this year was the lack of cold weather."*

Peter Curr – Association of Steel Tube and Pipe Manufacturers of South Africa (ASTPM)



## STEEL AWARDS 2013



**AVENG STEEL:**  
**AVENG TRIDENT STEEL, AVENG STEEL**  
**FABRICATION AND AVENG STEELEDAL**

*The creation of the steel cluster positions Aveng Steel as a leading player in the industry. The capabilities range from the supply of structural steel, automotive materials, special steel and reinforcing bars, as well as pipe and tube manufacturing and steel fabrication.*

**Contact Details**

Hazel Mohlala  
 PO Box 124054, Alrode  
 Marthunisen Road, Roodekop, Germiston, 1450  
 Tel: +27 (0)11 861 7105  
 Fax: +27 (0)11 865 3031  
 Email: trident@trident.co.za  
 Website: www.avengtridentsteel.co.za / www.aveng.co.za

The Aveng Group, leaders in infrastructure development in South Africa, recently reorganised its operations into industry clusters. Aveng Steel, the steel cluster, consists of Aveng Trident Steel, Aveng Steel Fabrication, (formerly DSE), and Aveng Steeledale.

This year, participation in the Steel Awards will be as Aveng Steel. The partnership with SAISC as the main sponsor is now in its fourth year and Aveng is very proud of this association.

The creation of the steel cluster positions Aveng Steel as a leading player in the industry. The capabilities range from the supply of structural steel, automotive materials, special steel and reinforcing bars, as well as pipe and tube manufacturing and steel fabrication. Aveng Steel has a foot print in all nine provinces in South Africa, is represented in six countries in Africa and supplies the Sub-Saharan Africa region.

**AVENG TRIDENT STEEL**

Aveng Trident Steel provides vast structural steel sections, plate and sheet metal of various sizes, and has a comprehensive range of carbon and alloy spring steel.

Processing by the specialised cutting division includes state-of-the-art, computerised, high definition plasmas, lasers and gas cutting machines. Guillotining, chamfering and bending are also available. Manufacturing of welded tube is offered, including an extensive range of squares and rectangular sections.

The coil processing division offers cut-to-length, blanking, slitting, press and tool cutting, angle cutting and edge dressing services.

To expand its product offering, Aveng Trident Steel has invested in various capital projects over the past year. The latest additions include a tube laser, which is capable of cutting tube structures that would not be possible with conventional cutting methods, and processing a wide variety of materials with different wall thicknesses and profile geometrics without physical contact; a roll-forming line used for forming, slitting and stripping into cold rolled sections; and a peeling machine.



Aveng Steel, the steel cluster, consists of Aveng Trident Steel, Aveng Steel Fabrication (formerly DSE), and Aveng Steeledale.



## STEEL AWARDS 2013



The Aveng Group was involved in the aesthetically pleasing Nellmapius Bridge over the N1 Highway.

## AVENG STEELEDALE

Aveng Steeledale was formed in the mid 1950s and grew both in size and stature to become a major technology leader in the reinforcing steel industry. Today it is recognised throughout South Africa and its neighbouring countries as one of the largest reinforcing steel and mesh suppliers, with 21 branches.

The strength of the company has been the ability to form partnerships with its customers. Aveng Steeledale provides products which are ISO 9001 compliant, has a quality management system and a full product package that complies with local and international safety requirements. The comprehensive product range includes: cut and bend reinforcing steel, stock lengths, construction mesh (all references), white mesh, wire products, pre-assembled reinforcing steel and much more.

Aveng Steeledale's vision remains to further entrench its market leadership by providing the technology, products and services which meet, and where possible, exceed stakeholders' expectations.

## AVENG STEEL FABRICATION

As the leading fabricator of structural steelwork and other industry-related products, Aveng Steel

Fabrication has a proven track record of consistent, reliable and efficient services to a broad range of customers.

Aveng Steel Fabrication's Vanderbijlpark workshops were established in 1947, and since then it has grown from strength to strength. One of the most significant strides was the upgrade and expansion to the workshop facility in 2010. This included a totally revamped workshop with 60 000m<sup>2</sup> under cover. This area has six fabrication bays that cater for light, medium and heavy structural steelwork, plate work, auto-fabrications, heavy plate girders and tubular items.

The latest CNC machines are used for the fabrication disciplines and serviced by overhead cranes. Maximum lifts in the heavy bay would be 200 ton with two 100 ton overhead cranes. The specialised offering to the industry includes an established detailing office using Tekla and Bocad systems.

Aveng Steel Fabrication maintains strict safety and quality controls in all work undertaken, certified to ISO 9001 Quality Management System as well as EWF/11W 3834 ISO Welding Certification.

Aveng Steel Fabrication has a proud history of being involved in some of South Africa's most notable projects, including the stadiums which were built for the 2010 FIFA World Cup, and the company is also currently involved in exciting renewable energy projects.

Looking forward, Aveng Steel is well placed regarding new ventures, specifically throughout the African continent. The cluster is committed to establishing long term partnerships in order to provide added value services to the industry. 

## STEEL AWARDS 2013



## MACSTEEL SERVICE CENTRES SA (PTY) LTD

*Africa's leading merchandiser,  
processor and distributor of steel and  
value added steel products*

### Contact Details

Dave Dawkshas, Group Marketing Director,  
Macsteel Service Centres SA (Pty) Ltd  
PO Box 7729, Johannesburg, 2000  
7 Brook Road, Lillanton, Boksburg  
Tel: +27 (0)11 871 0000  
Fax: +27 (0)11 823 3860  
Email: [info@macsteel.co.za](mailto:info@macsteel.co.za)  
Website: [www.macsteel.co.za](http://www.macsteel.co.za)

Macsteel is immensely proud of the following cellular beam projects recently completed in Africa:

- Swakop Indoor Pools – Namibia
- Kisumu Airport – Kenya
- Vilanculos Airport – Mozambique
- Livingstone Airport – Zambia
- Levy Business Park, Zambia
- MCB Ebene, Mauritius Commerical Bank, Mauritius
- Ongwediva Fresh Produce Market – Namibia
- Rundu Fresh Produce Market – Namibia
- Kenmare Moma Expansion Project – Zambia

### Optimising the value in the steel supply chain throughout Africa

With a proud history spanning more than 100 years and operating from a network of 79 service centres, branches and warehouses, MSCSA supplies the entire Sub-Saharan geographic region with the full range of carbon steel, special steel, stainless steel, aluminium products and value added steel processes to all sectors of industry.

Macsteel's Service Centres SA's branch network is strategically situated in close proximity to its target markets offering reliable, on-time service to its valued customers enabling them to operate more cost effectively whilst reducing their own inventories.

Macsteel is extremely proud of its more than 5 500 employees, whose commitment, ethics and passion contribute to the company attaining its enviable reputation in the market.

Macsteel Service Centres SA's extensive stockholding, comprehensive product range and superb infrastructure combined with its technical competencies and continuous improvement initiatives, enhances its status as the pre-eminent supplier of steel products to a vast valued customer base.

The company's recent capital expenditure of more than R950 million on additional warehousing and best in practice plant and equipment bears testimony to their unwavering confidence in the future of the steel industry in South Africa and Africa as a whole.

Macsteel Trading's highly innovative cellular beams continue to grow from strength to strength with projects ranging from commercial and architectural applications to industrial and mining structure solutions. Since their inception, Macsteel's cellular beams have been included in entries into the SAISC Steel Awards every year, with 2008 being a highlight for the Maponya Mall entry which was the overall winner for that year.

Further strategic initiatives within the Macsteel Group at Macsteel Roofing, include the manufacture of the acclaimed concealed fix roofing system Novotexi 440. This reputable product is able to withstand extremely high negative wind load pressures and is tested and certified by an accredited third party authority. Specialised products such as these continue to show increasing demand nationally and from within emerging markets in Africa.

Macsteel invites YOU to test their mettle and forge an enduring partnership with them as your steel supplier of choice!



Macsteel Trading's highly innovative cellular beams continue to grow from strength to strength.





# Africa's leading steel supplier

## CELLULAR BEAMS

Architectural | Commercial | Industrial | Extraordinary | Award Winning

Whatever your design needs...we've got the solution!

**Tel: 011 871 4600**

**Cnr Simon Bekker and Crompton Roads, Germiston South.**

**email: [design@mactrading.co.za](mailto:design@mactrading.co.za) or  
[tebogo.raaleka@mactrading.co.za](mailto:tebogo.raaleka@mactrading.co.za)**



**TRADING**

**The Macsteel Group - Africa's leading steel supplier - [www.macsteel.co.za](http://www.macsteel.co.za)**

## STEEL AWARDS 2013



CADEX SA

Cadex SA supplies and fully supports Tekla Structures the leading 3D modeling tool for structures. The innovative tools are used by individuals and teams to improve profitability, quality and performance and to reduce risk on their projects.

Tekla Structures is an innovative 3D solution that facilitates accurate design, detailing and management of intelligent structural and building models of any size or complexity with ease and precision. The tools cover all materials during the entire structural design process. Tekla's intelligent model integrates the entire structural project workflow from sales and initial bid, through detailing, fabrication and erection, to asset management.

It is the most advanced and integrated way to manage the shop-detailing, fabrication and erection of all steel structures. Tekla Structures is a model based system that reduces errors, increases productivity, and provides the highest levels of automation of fabrication and project management by interfacing with MIS and with CNC machinery.

Tekla Structures BIM (Building Information Modelling) software provides an accurate, detailed, and data rich 3D environment that can be shared by structural engineers, architects, concrete rebar detailers, steel detailers, steel fabricators, project managers and clients. At every stage the detailed models enable the highest level of constructability and production control.

Cadex SA, Tekla's regional reseller, brings more than 60 years of experience in the Southern African steel construction industry to their clients.

Visit [www.tekla.com](http://www.tekla.com) for details about more configurations and tools.

## Contact Details

John Swallow or John Duncan  
PO Box 411340, Craighall, 2024  
Tel: +27 (0)11 463 1857  
Fax: +27 (0)11 463 9445  
Email: [info@CadexSA.com](mailto:info@CadexSA.com)  
Website: [www.cadexsa.com](http://www.cadexsa.com)

## TUBULAR CATEGORY AWARD SPONSOR



## THE ASSOCIATION OF STEEL TUBE AND PIPE MANUFACTURERS OF SOUTH AFRICA

The Association of Steel Tube and Pipe Manufacturers of South Africa (ASTPM) was formed in 1983 to represent the welded carbon steel tube and pipe producers. The members account for over 70% of the installed capacity. Details, product range and all other relevant information are available on our website [www.astpm.com](http://www.astpm.com).

During the 30 years existence of the Association the members have loyally supplied the local market and have also exported in excess of 1.5 million tons of tube and pipe to over 50 countries. This has only been achieved due to the top-quality product that these members produce which is in compliance with both local and international specifications.

The Association continues to promote the use of tube and is active in ensuring that local standards are maintained and where necessary improved to meet local and international requirements.

One highlight that continues in the industry is the success of the standard Grade S355 Structural Tubing that was launched in 2010. The higher strength continues to provide a lighter and stronger steel solution to the structural steel industry and compliments the inherent benefits of tube. Sales are improving all the time.

Our members continue to invest in this industry and are expanding in value added machinery that includes plasma and laser cutting technology. These products are now more user-friendly especially with connections that save time and labour costs for the fabricator/erectors, enabling them to pass the savings on to their customers.

The ASTPM is pleased to be able to carry on with their sponsorship for this worthy award, both now and into the future and wish the SAISC every success for this flagship event.

## Contact Details

Colin Shaw or Margie Olivier  
PO Box 18587, Sunward Park, 1470  
Tel: +27 (0)11 823 3546 / +27 (0)11 823 2377  
Fax: +27 (0)86 777 7723  
Email: [astpm@astpm.com](mailto:astpm@astpm.com)  
Website: [www.astpm.com](http://www.astpm.com)





# Total process optimization

*Bob (35) knows the most efficient way to design, detail, and fabricate a steel structure. His company uses Tekla to automate fabrication and project management through interfacing with MIS systems and CNC machinery. What's more important, sharing the Tekla model allows the project team members to stay in the building information loop real-time.*

Contact **Cadex SA**,  
Tekla's Partner for  
Southern Africa  
[info@CadexSA.com](mailto:info@CadexSA.com)  
[www.CadexSA.com](http://www.CadexSA.com)  
+27 11 463 3641

Tekla BIM (Building Information Modeling) software solutions provide a data-rich 3D environment that can be shared by contractors, structural engineers, steel detailers and fabricators, and concrete detailers and manufacturers. Choose Tekla for the highest level of detail, accuracy, constructability and integration in project management and delivery. Visit our website to learn more about Tekla solutions and references. Since 2011, Tekla has been a part of the Trimble Group.

> [www.tekla.com](http://www.tekla.com)

 **TEKLA**  
A TRIMBLE COMPANY

## STEEL AWARDS 2013



## STEWARTS AND LLOYDS

## Contact Details

Hermien de la Mare  
PO Box 79458, Senderwood, 2145  
Pellmeadow Office Park, 60 Civin Drive, Bedfordview  
Tel: +27 (0)11 553 8500  
Fax: +27 (0)11 553 8510  
Email: info@sltrading.co.za  
Website: www.stewartsandlloyds.co.za

Stewarts & Lloyds, with a 110 year old history in South Africa and 30 branches countrywide, is a household name to many. The product portfolio has grown from the traditional Stewarts & Lloyds offering, to include a wide spectrum of steel products and value added services.

The company operates in various industries including light and general engineering, building and construction, mining, rural water, chemical, petro-chemical, automotive, agriculture, water reticulation, fire protection as well as servicing the local authorities.

Stewarts & Lloyds supplies:

- Steel and tube (sections, open sections, sheet and plate, expanded metal, round bar, square bar, drilled rails, window sections, special steels),
- Pipes and fittings (conveyance pipe, seamless pipe, copper pipe, malleable fittings, butt weld fittings, wrought steel and copper fittings),
- Valves (Our valves are widely used in the following fields: agriculture, mining, chemical, processing, construction, power generation, water, light and general engineering and the gas industries),
- Pumps (surface pumps, borehole pumps),
- Irrigation (for residential, commercial, sports, turf, design and technical support),
- Laser products,
- Fencing; as well as
- Value added products such as profiling, guillotining, bending, rolling and plasma cutting.

The cash and carry outlets throughout the country sell Stewarts & Lloyds' products, as well as wire, fencing, industrial hardware and security products.

To find your nearest branch, contact the customer care line on 0860 10 27 99 or visit our website at [www.stewartsandlloyds.co.za](http://www.stewartsandlloyds.co.za).

## PARTNER SPONSORS



## B&amp;T STEEL

## Contact Details

Bryan Wilken  
16 Flambojant Street, Delmas, 2210  
Tel: +27 (0)13 665 1914  
Fax: +27 (0)86 528 3349  
Email: marketing@btsteel.co.za  
Website: www.btsteel.co.za

B&T Steel was established in 1995 when directors Trevor van Vuuren, Norman van Vuuren and Ben Dicks realised that there is a niche market opportunity for supplying quality steel structures to local and export markets. Since most of our clients came from Witbank, Pretoria and Johannesburg, we started operations in a small rented factory with two offices in Delmas, Mpumalanga.

B&T Steel currently occupies 90 000 square meters of land and we employ 250 skilled staff members that specialise in detailing, fabrication and erection of structural steel in South Africa and Sub-Saharan Africa. At B&T Steel we pride ourselves in our well-equipped workshops with automated CNC machines, which enable us to improve on basic concepts, time constraints, accuracy and productivity. We have our own mobile cranes, have been BBBEE compliant for a number of years and we are ISO 9001 accredited.

We make sure that we always stay on top of our game through continuous skills development especially through Merseta, the accredited training institute.

During the past three years we have completed projects in Uganda, Burkina Faso, Sierra Leone, Mauritania, Namibia, Angola, Zambia, Botswana, Mozambique, DRC and Equatorial Guinea, and look forward to future expansion in Africa and beyond. We believe that the future of the steel industry is very promising despite daily struggles and concerns over budget constraints and tight margins.

We are excited to see what the future holds for us as a company!



# SIGNIFICANT CAPABILITY. EXTENSIVE REACH.



## The complete turnkey offering.

At **B&T Steel\*** we are passionate about steel. We specialise in the design, detailing, manufacture and erection of all structural steel work across South Africa and sub-Saharan Africa.

### At B&T we pride ourselves in our:

- World-class quality and excellent service.
- Technical team to assist at all times.
- Design and detailing using 3D modelling.
- Blasting and painting facilities.
- Own transport fleet.
- Operations - local and cross border.
- ISO accreditation.



**B&T Steel. A unique approach to steel.**



**B&T**  
REDEFINING STEEL CONSTRUCTION

\* B&T is fully BEE compliant and a member of the South African Institute of Steel Construction (SAISC), the International Steel Fabricators Council (ISF) and the Gauteng Master Builder Association.

Telephone: 013 665 1914/1966 | Facsimile: 013 665 1881 | Email: [info@btsteel.co.za](mailto:info@btsteel.co.za)

[www.btsteel.co.za](http://www.btsteel.co.za)

## STEEL AWARDS 2013

**ArcelorMittal, the world's leading steel producer**

Founded in 1928, ArcelorMittal South Africa is a subsidiary of the world's leading steel and mining company and Africa's largest steel manufacturer. The company operates in 60 countries and employs approximately 260 000 people worldwide. ArcelorMittal SA has a capacity of 7.8 million tons of liquid steel per annum with steel manufacturing and chemical plants in Newcastle, Pretoria, Saldanha, Vanderbijlpark and Vereeniging. The company employs approximately 10 000 staff members and contractors across South Africa. ArcelorMittal SA produces carbon steel in both flat and long products which is supplied into all major steel consuming industries and is used extensively in critical infrastructure projects. The company's target market is Sub-Saharan Africa with a specific focus on Southern Africa. Through the ArcelorMittal Group the company has access to extensive global resources including technical and research facilities.

**ArcelorMittal's products are branded and/or marked for you protection**

We pride ourselves in our brands, trademarks and logos which stand for sustainability, quality and leadership. This is why we ensure that, where applicable, we brand/mark our products with our logos and product information. This guarantees you that the products are from ArcelorMittal and of the highest quality. It is very important to know what you are buying as the quality of the material you use is pivotal to the sustainability and quality of your projects, regardless the size.

**Steel is infinitely recyclable**

ArcelorMittal is the biggest recycler of scrap steel globally, which cuts down on around 36 million tons of carbon dioxide.

**Contact Details**

Lara Benson  
PO Box 2, Vanderbijlpark, 1900  
Tel: +27 (0)16 889 4484  
Fax: +27 (0)16 889 3487  
Email: lara.benson@arcelormittal.com  
Website: www.arcelormittal.com/southafrica/  
GPS: E 27.8033 S 26.6703 or E 27° 48' 19.6" S 26° 40' 22.3"

**Fabricating Innovative Steel Solutions**

At Genrec Engineering, our values deliver your vision. We know that a company's products are a reflection of the team that creates them. Our people are the underlying force driving the delivery of your vision with embedded values to deliver beyond our customers' expectations.

Working with honesty, accountability and care, our collective team is committed to fabricating innovative steel solutions to meet your specific needs.

Together with the sister Murray & Roberts companies, Genrec can offer complete turnkey solutions. Genrec's combination of manufacturing, construction and site management services, provide clients with a one-stop service. Situated in Wadeville, just outside of Johannesburg, Genrec's facility has more than 55 000m<sup>2</sup> of undercover workshops and open areas equipped with the latest systems, CNC equipment, welding processes as well as high volume blasting and painting resources spanning 19 500m<sup>2</sup>. Genrec has a geographical focus that extends to Africa and the Middle East but has undertaken projects across Canada, America and Australia.

Genrec's capabilities include: Total project management; steel detailing solutions; light, medium and heavy structural fabrication; heavy machining; planning and programming; material logistics, site services and erection.

At Genrec Engineering, our team is happy to discuss the value we can add to your projects with our resources, be that a single capability or the entire project offering.

Genrec Engineering specialises in the manufacture of structures and equipment in diversified markets such as: Power generation, mining, petrochemical, mineral beneficiation, infrastructure, oil and gas as well as industrial.

**Contact Details**

Michael Mamotte, New Business Development Manager  
Private Bag X035, Wadeville, 1422  
Tel: +27 (0)11 876 2306  
Fax: +27 (0)86 765 0363  
Email: michael.mamotte@murrob.com  
Website: www.genreceng.co.za



## STEEL AWARDS 2013

NJR Steel is one of the South Africa's top five distributors of steel products.

The business has 18 branches, geographically spread in five provinces, and stocks a broad range of steel and related hardware products. Our 900 staff members are committed to servicing your steel needs and our fleet of 140 delivery vehicles ensures we deliver to our customers timeously.

NJR continues to evolve and now provides in-house de-coiling, slitting and a high-tech CNC cut and drill beam line. NJR has invested in new roofing lines which allows us to roll to size, various thicknesses of both galvanized and Chromadek products. We have also established a state-of-the-art mesh manufacturing plant, situated in Labore, Brakpan, which produces standard size and customised sheets and rolls of reinforcing mesh. Hard drawn wire in various diameters, cut to size, will also be a new product in our offering.

Recent acquisitions such as NJR Wantsteel enable us to manufacture palisade fencing solutions in various different profiles for our customers. Part of this offering is the newly launched De-Fence. This is an aesthetically pleasing, easy to install, high security solution proving to be very popular with our fencing contractors and architects alike. NJR Reinforcing, situated in Kya Sands, is another exciting addition to our stable which enables us, through investing in high-tech world-class equipment, to penetrate the cut and bend market with confidence. NJR has also invested in a paint company, NJR Paint which will allow us to provide high quality industrial and decorative paints to our customers via our extensive branch network.



## NJR STEEL HOLDINGS

### Contact Details

Colin Chapman  
PO Box 58337, Newville, 2114  
Tel: +27 (0)11 477 5515  
Fax: +27 (0)11 477 5550  
Email: [cchapman@njrsteel.co.za](mailto:cchapman@njrsteel.co.za)  
Website: [www.njrsteel.co.za](http://www.njrsteel.co.za)

# Not only distributors of steel products, now manufacturing as well.



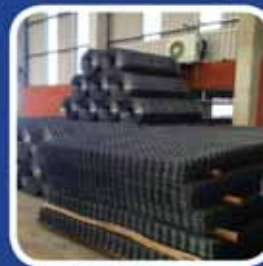
Long Products



Flat Products



Reinforcing Steel



Welded Mesh



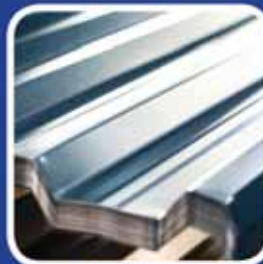
Steel Structures



Structural Steel



De-Fence



Roofing



Paint & Hardware



Distribution

NJR Steel is now adding further value by manufacturing a range of products which are distributed through our established network of branches nationwide, enabling us to provide all your steel requirements under one roof.

## STEEL AWARDS 2013



## EAZI SALES &amp; SERVICE

## Contact Details

Elisma Malherbe  
 Postnet suite #265, Private Box x121, Halfway House, 1685  
 Unit 3, No. 2 Swart Drive, President Park, Midrand, 1685  
 Tel: +27 (0)11 312 7308  
 Fax: +27 (0)11 312 7381  
 Email: sales@eazi.co.za  
 Website: www.eazisales.co.za  
 GPS: S 26°00.048 E 028°08.477

## Simplifying steel erection at height with Eazi Sales &amp; Service

Construction companies are fine-tuning their competitive edge by performing work at height quicker, safer and more economically than ever before. The enabler of choice: Eazi Sales & Service's range of JLG access platforms and telehandlers, and Magni high-capacity and rotational telescopic handlers – a complete access and material handling solution from a single supplier.

JLG mobile elevated work platforms, or 'cherry pickers', facilitate faster construction times and less red tape around safety approvals, becoming the perfect alternative to scaffolding, cranes using boson chairs, ladders and even rope access systems that can delay construction with lengthy setup periods. Eazi Sales & Service further offers operator training that helps ensure rapid and safe setup for maximum cost-efficiency.

- **Boom lifts:** These feature large work envelopes with articulating or telescopic booms. Ideal for working heights of up to 47 metres. Available in diesel and electric variants, depending on requirements for indoor or outdoor applications.
- **Scissor lifts:** For vertical working heights of up to 26 metres with platform capacities of up to 1 ton. Diesel or electric variants available.
- **Telehandlers:** JLG and Magni rotor and fixed telehandlers feature capacities from 2.5 tons to 30 tons, and a lifting height from 5 metres up to 30 metres. Capable of a variety of functions with a wide selection of attachments.
- **Customised solutions:** Eazi Sales & Service tailors customised solutions to each client's requirements to ensure maximum effectiveness. This involves site assessments, operator training and certification, machine maintenance and parts supply.



KWAZULU-NATAL

## Master of ceremonies: Kevin Perkins

Kevin Perkins is one of South Africa's top selling stand-up comedians. Born in Durban in 1972, Kevin has experienced life, and then some! Kevin is a cancer survivor and a father of two (at least!). Originally a mechanical engineer, Kevin finally gave in to his natural calling – comedy, and started performing in clubs in and around Johannesburg. Kevin is well known for his Indian comedy character creation, Michael Naicker™ and is considered by many to have set the tone for the explosion of stand-up comedy that has occurred in South Africa. Kevin Perkins is a true heavyweight performer and has always "boxed well above his weight", with sold-out venues around the world.

Contact details: Kevin Perkins can be booked through Jean-Pierre of Entertainment  
 Online – Email: jp@entertainment-online.co.za or Mobile: +27 (0)76 798 6986



## Entertainment: THE GIRLS: Cristina Rodrigues and Cathy del Mei

The perfect female duo delivering an interesting bouquet of live vocals, electric violin and saxophone to compliment all events from cocktail parties to private celebrations and top class awards evenings!

Contact details:  
 Cristina Rodrigues Tel: +27 (0)82 921 2752 / Email: info@cristinarodrigues.com  
 Cathy Del Mei Tel: +27 (0)82 682 2866  
 Website: www.cristinarodrigues.com





# Taking you safely to new heights

Enhancing safety, reducing costs, and heightening productivity have never been this Eazi, with a complete range of fully-supported JLG access equipment for indoor and outdoor applications.

## Diesel telescopic boom

Up to 47 m working height  
Up to 450 kg lift capacity



## Diesel articulated boom

Up to 47 m working height  
Up to 450 kg lift capacity



## Electric boom

Up to 20 m working height  
Up to 230 kg lift capacity



## Diesel/Electric scissor lift

Up to 26 m working height  
Up to 1 020 kg lift capacity



## Trailer-mounted boom

Up to 17 m working height  
Up to 227 kg lift capacity



## Compact Crawler

Up to 23 m working height  
Up to 11.3 m horizontal outreach



## Toucan mast boom

Up to 12.65 m working height  
Up to 5.55 m horizontal outreach



## Telehandler

Up to 17 m lift height  
Up to 4 tons lift capacity



Call us now for your customised access solution!

Look out for JLG at BAUMA,  
18-21 September - Stand no. E21

**bauma**  
Africa 2013

**EAZI** SALES & SERVICE

SOLE DISTRIBUTOR:  
**JLG**

**+27 11 312 7308**  
sales@eazi.co.za  
www.eazisales.co.za

## STEEL AWARDS 2013



## TUBULAR HOLDINGS

## Contact Details

Tony Trindade  
PO Box 1342, Bedfordview, 2008  
8 Hawley Road, Bedfordview, 2007  
Tel: +27 (0)11 553 2000  
Fax: +27 (0)11 450 2165  
Email: tony.t@tubular.co.za  
Website: www.tubular.co.za

Established 34 years ago in Emalahleni (Witbank), Tubular is now one of the largest privately owned engineering and construction groups in Southern Africa and employs some 2 500 people. The embedded values of integrity, accountability, initiative and teamwork are the mainstay of the group's success.

The comprehensive range of services provided include intelligent model shop detailing, structural steel, plate and pipework fabrication, supply and erection and the installation of mechanical equipment. The in-house electrical and instrumentation capacity allows the group to provide the total construction solution for mining, industrial, petrochemical and power projects throughout the region.

Tubular has more than 50 000m<sup>2</sup> under roof structural steelwork, plate and pipework fabrication capacity. Extensive use of CNC machines throughout the fabrication process ensures fast turnaround, accuracy and quality, on time. The in-house blast facilities and paint shop adjacent to the works ensure fabricated sections are dispatched direct to site.

The group owns 105 mobile cranes, six of which have a lifting capacity in excess of 400 tons, thereby allowing Tubular to tackle the most challenging fast track projects. Electronic tracking of fabricated components, modularisation of construction and maximisation of heavy lift capacity provides Tubular with flexibility to meet the most demanding deadlines.

The group recognises the need for job creation through its valued partnership with IDC and continued support from a solid in-house training programme.

Tubular is proud to be a partner sponsor of the SAISC Steel Awards 2013 in this vibrant and durable steel construction industry.



## PEDDINGHAUS CORPORATION

Established in 1903 in Gevelsberg, Germany by Paul F. Peddinghaus, Peddinghaus Corporation has remained the industry leader in steel fabrication equipment for over 109 years. Headquartered in Bradley, Illinois, USA, Peddinghaus has evolved into a globally respected company that is currently under its fourth generation of family management.

Renowned for superior craftsmanship and design, Peddinghaus machines are recognised throughout the world for their power, speed, and durability. By maintaining a team of engineers solely for the research and development of structural equipment, Peddinghaus continues to redefine industry standards for efficiency, and cost reduction.

Peddinghaus' mission is to ensure 100% customer satisfaction; this is achieved by maintaining the largest staff of field service technicians and customer support in the industry. Housing an extensive parts inventory at all of our facilities worldwide, Peddinghaus guarantees that customers receive essential parts in the fastest manner possible. This mission is further exemplified by Peddinghaus' 24 hour technical support centre, the only one of its kind within the structural machine tool industry.

Peddinghaus product lines include: Drill lines, plate processors, angle/detail machines, thermal cutting/coping, automated layout marking, band saws, ironworkers and raptor 3D CAD/CAM software.

With manufacturing facilities located in 5 different countries and sales and service staff throughout the globe, Peddinghaus' innovative designs and investment in cutting edge technology will continue to grow with the ever changing structural steel industry.

## Contact Details

Patrick Pereira, Regional Sales Manager  
Peddinghaus South Africa Office: 883 Vlakhaas Street,  
Constantia Kloof, Roodepoort, 1709  
Tel: +27 (0)11 500 8322  
Email: patrick-pereira@peddinghaus.com  
Website: www.peddinghaus.com





TUBULAR HOLDINGS

"The innovative fabrication and construction company"

Detailing  
Construction Management  
SMPPE&I  
Corrosion Protection  
Supply  
Fabrication  
Erection  
Commissioning

[www.tubular.co.za](http://www.tubular.co.za)

JOHANNESBURG OFFICE

8 Hawley Rd 0861TUBULAR

Bedford view (T) 011 5532000

PO Box 1342 (F) 011 4502160

2008 E-mail:brobertson@tubular.co.za



Cert. No 332492 HQ



## STEEL AWARDS 2013



## VITAL ENGINEERING

Since 1939 Angus McLeod and Vital Engineering have established a reputation for quality and service in the manufacture of all types of gratings, stair treads, pressed floors and safety handrails. Its brand names of Vitagrid and Maclock have become synonymous with versatility, quality and service.

Vital Engineering has its headquarters in Boksburg, Gauteng, covering an area of 33 000 square metres which houses a fabrication area, a loading area and overhead crane facilities covering an area of 18 000 square metres. This is complemented by sales offices in Cape Town and Durban and a distributor footprint which includes Swaziland and stretches throughout South Africa from Walvis Bay and Windhoek to Lesotho, Phalaborwa and Rustenburg to East London, Port Elizabeth, Welkom and Kimberley.

The Group offers a wealth of product expertise and has been involved in the supply to power plants, petrochemical plants, materials handling projects, mining, process plants, pulp and paper, food and beverage as well as most facets of the civil and structural engineering industries, both domestically and internationally.

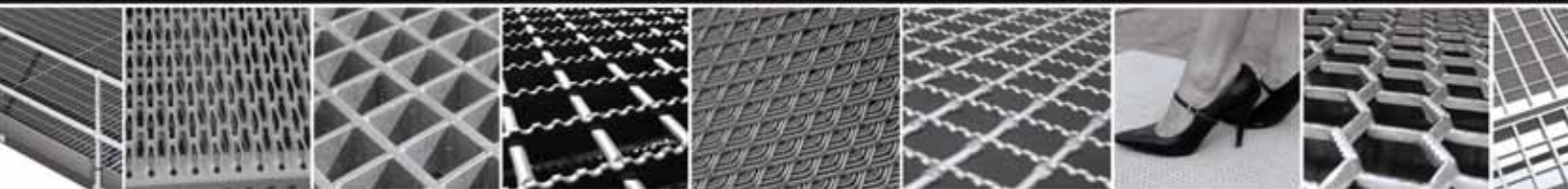
A variety of products and materials for numerous applications are readily available, when either costs or corrosion are factors. The range includes bitumen dipped, galvanized (610g/m<sup>2</sup>) and mild steel. Other grades of materials such as SS304, SS316, structural grade aluminium and 3CR12 can also be manufactured.

The company's products have been certified to internationally accepted standards and a fully implemented and documented ISO 9001 quality assurance system is in place.

## Contact Details

Dodds Pringle  
PO Box 6099, Dunswart, 1508  
Vital House, Lea Road, Dunswart, Boksburg North  
Tel: +27 (0)11 8988500  
Fax: +27 (0)86 743 9880  
Email: sales@gratings.co.za  
Website: www.vitagrid.com

## VITAGRID GRATING • EXPANDED METAL • HANDRAILS • FIBREGLASS GRATINGS



## REFINING YOUR FLOORING NEEDS.

Vital safe access on time.

Since 1939 Angus McLeod and Vital Engineering have established a reputation for quality and service. Our brand names of Vitagrid and Maclock have become synonymous with versatility, quality and service. Manufacture of all our gratings, stairtreads, handrails and now also our new expanded metal products is strictly controlled. We are able to cater for standard panels, stairtreads and handrails in addition to offering a cut-to-size and tailoring service. For more info, visit [www.vitagrid.com](http://www.vitagrid.com).



VITAL ENGINEERING &amp; ANGUS MCLEOD

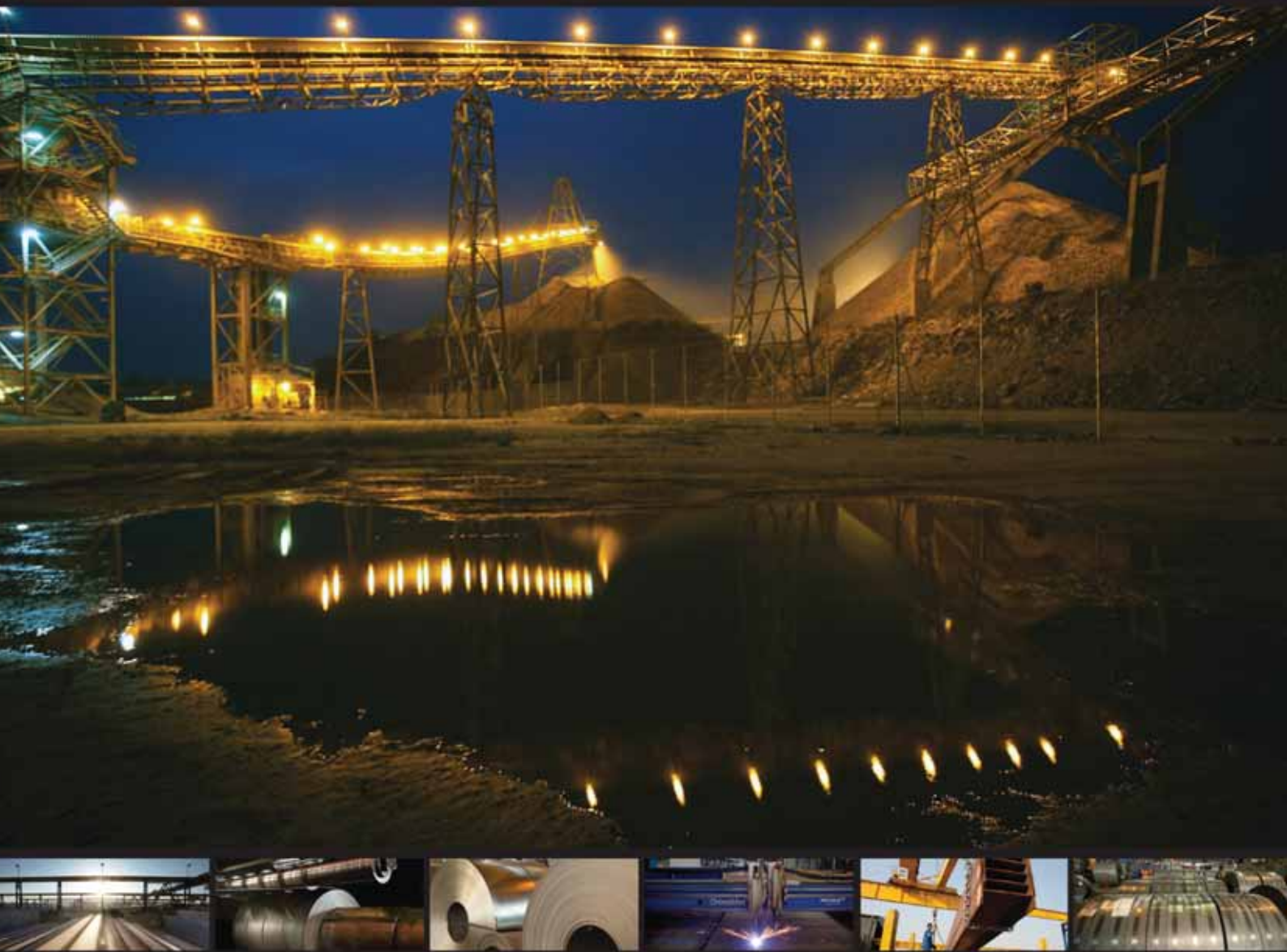


Gratings • Handrails • Expanded Metal • Vitagrid • Maclock • Vitacon • Vitex • Vitaglass • Stairtreads • Fiberglass

Website: [www.vitagrid.com](http://www.vitagrid.com) • Email: [sales@gratings.co.za](mailto:sales@gratings.co.za) • International Enquiries Direct: +27 (0) 11 898 8500 • Fax: 086 743 9880



# THE STRENGTH OF STEEL IN AFRICA



The integration of the Aveng Group's three steel companies, Aveng Trident Steel, Aveng Steeledale and Aveng Fabrication into one cluster known as Aveng Steel, creates a new powerhouse in the steel industry.

Aveng Steel is the leader and supplier of structural work steel, sheet metal, carbon and alloy spring steel, welded tube and the largest supplier of reinforcing steel and mesh. This integration will continue to provide customers in South Africa and across the African continent with the best products which deliver the highest quality for infrastructure development.

Aveng Steel, the one-stop steel solution.

For more information contact: [www.aveng.co.za](http://www.aveng.co.za)





## EDITOR'S NOTE

"The only constant in life is change" – Heraclitus (535 BC to 475 BC). And he didn't even experience the information age...

The world with everything in it changes all the time – big, small, fast or slow. The strangest thing is that humans mostly resist it or try to at least. Embrace it or fear it, change is inevitable.

The beginning of September this year marked a big change at the Institute. Paolo Trincherio has taken the reins from Hennie as CEO. Although we are sad to say goodbye to Hennie, we are confident that he leaves the Institute in an excellent state and in good hands. We all look forward to working with Paolo and the new endeavors the Institute will embark upon under his leadership.

Two new associations were also formed under the SAISC namely SAMCRA (Southern African Metal Cladding and Roofing Association) and POLASA (Power Line Association of South Africa). The associations were created to address the specific issues of the related products and markets that could not be addressed as the SAISC. We will talk about them a lot more in the coming issues.

What about Steel Awards 2013? We can say that it is the 32nd Steel Awards, but we can't say it is the same animal from 1981. It evolved into one of the biggest events on the industry's calendar. It certainly keeps us busy. This year it is about celebrating Africa as a fast growing, diverse continent.

Though we have not received any 'Africa' entries, we were once again in awe of what South Africans can do – from the Medupi Power Station steelwork to the many challenging refurbishment projects entered into this year's Steel Awards. It is clear that Africa holds tremendous potential for us and that South Africans don't stand back for that word – change.

# steel CONSTRUCTION

Volume 37 No. 5 2013

## Contents

- SAISC COMMENT
- 2 Steel Awards marks change at the Institute
- HONORARY MEMBERSHIP
- 5 Honorary life membership: John Barnard
- STEEL AWARDS 2013
- 8 Main sponsor
- 10 Table décor sponsor
- 12 Photo competition sponsor
- 12 Tubular category award sponsor
- 14 Light steel frame award sponsor
- 14 Partner sponsors
- 23 Overall winner
- 31 The judges of Steel Awards 2013
- 32 Photo competition
- 37 Category winner and nominations: Mining and industrial
- 47 Category winner and nominations: Refurbishment and extension
- 59 Category winner and nominations: Light steel frame
- 73 Category winner and nominations: Tubular steelwork
- 81 Category winner and nominations: Residential
- 89 Category winner and nominations: Architectural
- SAISC NEWS
- 104 SAISC membership



Front Cover: Overall Winner and winner of the Mining and Industrial Category: Medupi Power Station main frame and boiler grid supports

### PUBLISHED BY

Southern African Institute of Steel Construction  
1st Floor, Block C  
43 Empire Road, Parktown West  
P O Box 291724, Melville 2109  
Tel +27 11 726 6111  
Fax +27 11 482 9644  
E-mail: [info@saisc.co.za](mailto:info@saisc.co.za)  
Web site: [www.saisc.co.za](http://www.saisc.co.za)

### EDITOR

Renee Pretorius  
...with pepper communications  
Tel +27 83 565 7173  
E-mail: [renee@saisc.co.za](mailto:renee@saisc.co.za)

### ART DIRECTOR

Sandra Addinall  
Tel +27 11 868 3408  
Fax +27 11 900 1922  
E-mail: [cbtdesign@adcot.co.za](mailto:cbtdesign@adcot.co.za)

### REPRO & PRINT

Camera Press  
Tel +27 11 334 3815

### ADVERTISING

Viv van Zyl  
Tel +27 16 349 6839  
Cell +27 82 492 8603  
Fax +27 86 647 2788  
E-mail: [viv@lantic.net](mailto:viv@lantic.net)

### SOUTHERN AFRICAN INSTITUTE OF STEEL CONSTRUCTION (SAISC)

Chief Executive Officer  
Paolo Trincherio  
[paolo@saisc.co.za](mailto:paolo@saisc.co.za)

### Education Director

Spencer Erling, PrEng.  
[spencer@saisc.co.za](mailto:spencer@saisc.co.za)

### ISF Director

Neels van Niekerk  
[neels@isf.co.za](mailto:neels@isf.co.za)

### SASFA Director

John Barnard  
[john.barnard@saol.com](mailto:john.barnard@saol.com)

Views expressed in articles and advertisements are not necessarily the views of the SA Institute of Steel Construction. Articles or extracts thereof may be reproduced provided that prior permission is obtained from the publisher and full acknowledgement is given.

### CHANGES TO THE MAILING LIST:

Please notify us of any changes to the mailing list.  
[info@saisc.co.za](mailto:info@saisc.co.za)

### SUBSCRIPTIONS:

To subscribe to Steel Construction contact us at [info@saisc.co.za](mailto:info@saisc.co.za)

### ANNUAL SUBSCRIPTION:

R100.00 South Africa  
R200.00 Other countries  
Prices include VAT, packaging and postage.

Follow us on  and 



OFFICIAL JOURNAL OF THE SOUTHERN AFRICAN INSTITUTE OF STEEL CONSTRUCTION



MAIN SPONSOR



TABLE DÉCOR SPONSOR



PHOTO COMPETITION SPONSOR



TUBULAR AWARD SPONSOR



LIGHT STEEL FRAME AWARD SPONSOR



PARTNER SPONSORS

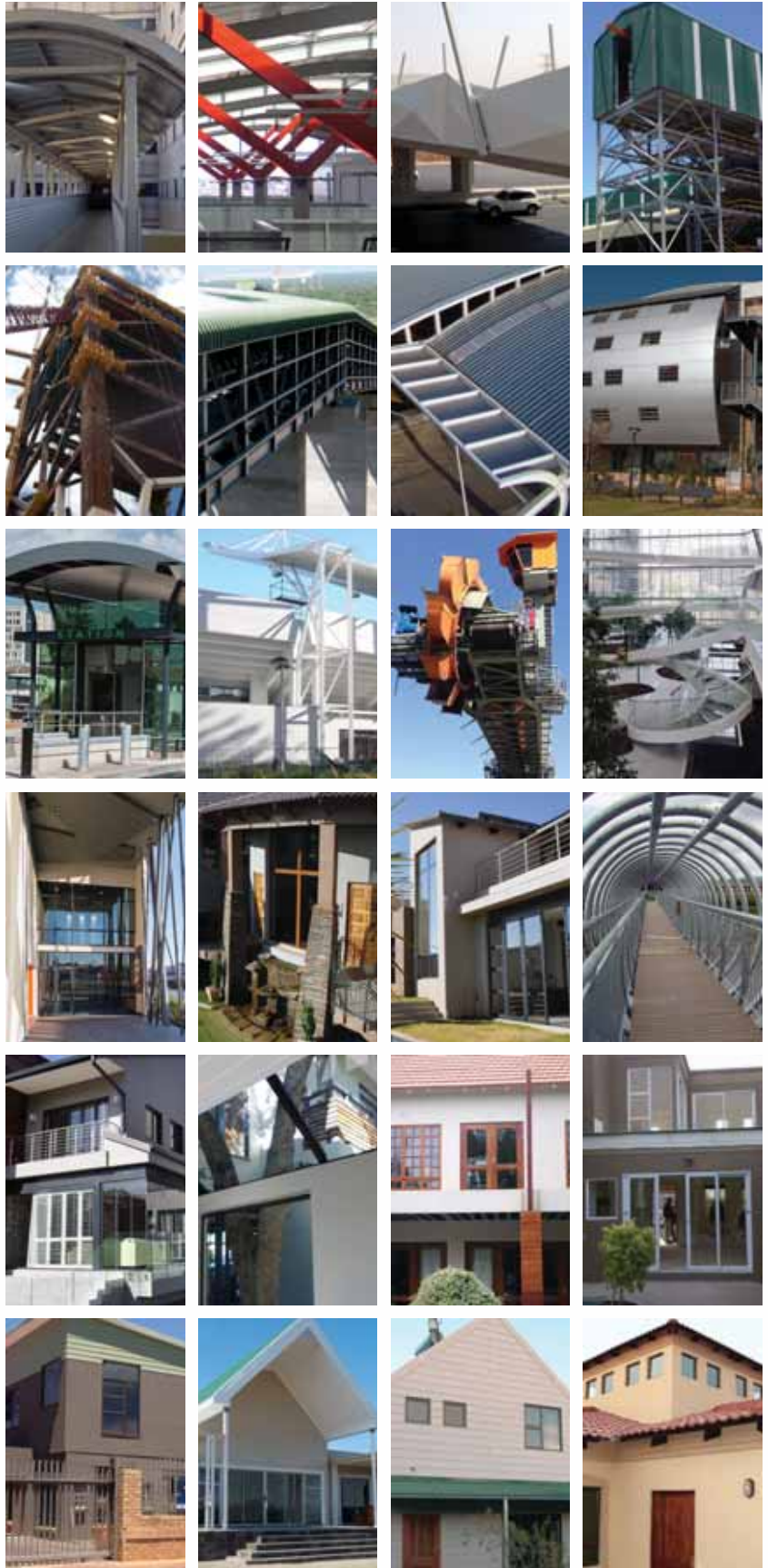


Steel Awards 2013

CATEGORY NOMINATIONS







## Steel Awards 2013

**AWARD ENTRIES**





2013 AWARDS WINNER

Photography: Ed Jardine

# OVERALL WINNER

## AND MINING & INDUSTRIAL CATEGORY WINNER:

### Medupi Power Station Main Frame and Boiler Grid Supports

Lephalale, Limpopo Province

By Spencer Erling, Education Director, SAISC

*The boiler support structures really exhibit excellence in the use of structural steel. It is a classic heavy engineering project of spectacular proportions. It is heavy engineering at its best. The structures look so clean and simple especially before all the rest of the steelwork, platforms, boiler casings and piping bundles, and other equipment enclose them. Don't be fooled. These four legged braced monsters soar 105 metres into the sky.*

The main frame and boiler grid supports project at Medupi Power Station is the mining and industrial category winner as well as overall winner for Steel Awards 2013.

For the second time in a row Medupi Power Station has walked off with the honours at Steel Awards. I am sure you all remember those magnificent platforms and steel chimney ducts that move the last of the cleaned discharges into the sky. Compared to last year's winner, it is hard to conceive just how varied the structures for a coal fired power station can be. Long may the power stations continue to provide us with such interesting winning entries.

The boiler support structures really exhibit excellence in the use of structural steel. It is a classic heavy engineering project of spectacular proportions. It is heavy engineering at its best. The structures look so clean and simple especially before all the rest of the steelwork, platforms, boiler casings and piping bundles, and other equipment enclose them. Don't be fooled. These four legged braced monsters soar 105 metres into the sky. They are supplied and erected in five levels.



The columns are 2.1 metres square made from plate up to 40mm thick. The base plates are 120mm thick and they alone weigh 7.5 tons each. The individual mass of the column sections as delivered weighed up to 85 tons each. For the technically minded, the material specification called for steel grade S355J0 normalised and through thickness tested. The girders are equally impressive. The 288 elements making up a boiler support structure have a mass of 3 920 tons.

The fabrication is worthy of special mention. The major boxed column and beam components are fabricated to the extremely exacting dimensional tolerance requirements (2 millimetres on those massive chunky pieces of steel). Hats off to the teams who achieved those exacting requirements! The boxed columns have extensive diaphragm and stiffening requirements making it difficult to meet the 'squareness' requirements, especially taking the distortion resulting from the welds into account.

There are numerous machined interfaces which have added to the challenge of satisfying dimensional tolerances.

Then of course there are those exceptional welding requirements to the highest of standards especially for the Complete Joint Welds. Non-destructive testing was extensive, but in the end all requirements have been met.

At a human level, the biggest challenge is in fact to satisfy four levels of quality assurance, each trying to outdo the inspection team before.

A full trial erection in the works was required for all four sides of the support structures. So each column was used twice in the temporary process ensuring proper fit-up of all four sides individually and collectively when the structures are finally erected.

The erection process starts with sliding of a reinforced concrete list shaft ahead of steel erection. There are temporary access bridges at each of the five upper levels. In the pictures all the steelwork that is painted yellow is of a temporary nature to assist in the erection process, for safe access and the like.

The erection process of lifting and fixing beams, columns and bracing elements at levels up to 105 metres takes careful planning. Careful study of the pictures clearly shows the temporary platforms which have been detailed with the rest of the permanent steelwork and attached to each connection point to ensure safe working for the crews.

Transporting the elements to site is a logistical mission of its own. The boiler support beams which weigh about 90 tons each are an impressive 28.5 metres long x 6.1 metres deep.

The boiler support grid at the 105 metre level is critical to the success of the boiler house structures. It consists of 110 structural elements.

A structural failure at this level could result in the release of super-heated steam which would "stew anyone in the vicinity alive" – it just does not bear thinking about. The standard of engineering at every level in the process is





enormously high i.e. structural design, connection design, detailing of the structures, fabrication and erection and the comprehensive checking to ensure that the demanding requirements are fully met. They are understandable and justifiable.

To ensure accommodation of expansion and contraction of the boilers, they hang from those 6.1 metres deep and 28 metres long plate girders up at the 105 metre level. In addition this 105 metre level supports the top floor of the structure, some of the large ducting elements and other boiler related items. It also supports a 20 ton capacity travelling crane on its own gantry system, used to erect items that surround the boilers.

Individual lifting of each of the items up to the 105 metre level would be a slow and possibly dangerous process. To eliminate this, the whole of the boiler grid, the floor, the 20 ton erection crane, the duct and other elements are assembled off temporary supports at the first 16.5 metre level.

Then using re-useable lifting steelwork and strand jacking techniques, the 1 200 ton load is slowly hoisted up through and above the 105 metre level of the main frame. Eight 10 ton end pieces are attached to those 6.1 metre deep girders and then the whole system is lowered and bolted to the 105 metre level.

That is an engineering achievement of note.

Given the correct information timeously, South Africa really does have the capability to construct these enormous projects. The main frame and boiler grid structures for Medupi Power Station are truly masterpieces of heavy engineering that South Africa can be justly proud of and truly deserving of our overall winner's award for 2013.


## JUDGE'S COMMENT

by Louis Breckenridge, representing the  
Construction Engineering Association (CEA)

It is difficult to grasp how impressive they are until you get close to these gigantic objects, all the more impressive because of all the contentious publicity surrounding Medupi.

These structures demonstrate clearly the capability of South African fabricators to supply and erect very sophisticated, heavy structures as well as any country in the world. The quality of the workmanship is exceptional, particularly the welding and fit up.

The paperwork and quality control was a great challenge, every component can be tracked to the material it was made from and which materials have certified test records. Each grade 10.9 galvanized high strength bolt has its own pedigree.

The steelwork fabricator had to satisfy four inspection authorities. They are also very proud of the safety record achieved while fabricating this steelwork. 

## project team

### Developer/Owner:

Eskom

### Architect:

Eskom

### Structural Engineer:

Hitachi Power Europe

### Quantity Surveyor:

Genrec Engineering (Pty) Ltd

### Project Manager:

Hitachi Power Africa

### Main Contractor:

Hitachi Power Africa

### Steelwork Contractor/s:

Genrec Engineering (Pty) Ltd

### Detailers/ Detailing Company:

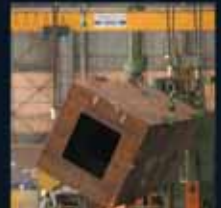
Genrec Engineering (Pty) Ltd

### Site Erection:

Murray & Roberts



# EXCELLENCE IN FABRICATING INNOVATIVE STEEL SOLUTIONS



At Genrec Engineering, our values deliver your vision. We know that a company's products are a reflection of the team that creates them. Our people are the underlying force driving the delivery of your vision with embedded values to deliver beyond our customers' expectations.

Working with honesty, accountability and care, our collective team is committed to fabricating innovative steel solutions to meet your specific needs. Genrec's capabilities include:

- Total Project Management
- Steel Detailing Solutions
- Light, Medium & Heavy Structural Fabrication
- Heavy Machining
- Planning and Programming
- Material Logistics
- Erection

At Genrec Engineering, our team is happy to discuss the value we can add to your projects with our resources, be that a single capability or the entire project offering.

Genrec Engineering specialises in the manufacture of structures and equipment in diversified markets such as:

- Power Generation • Mining • Petrochemical • Mineral Beneficiation
- Infrastructure, Oil and Gas, and Industrial



**Our Values** | Honesty and Integrity | Accountability | Care | Respect | Commitment

## Genrec Engineering

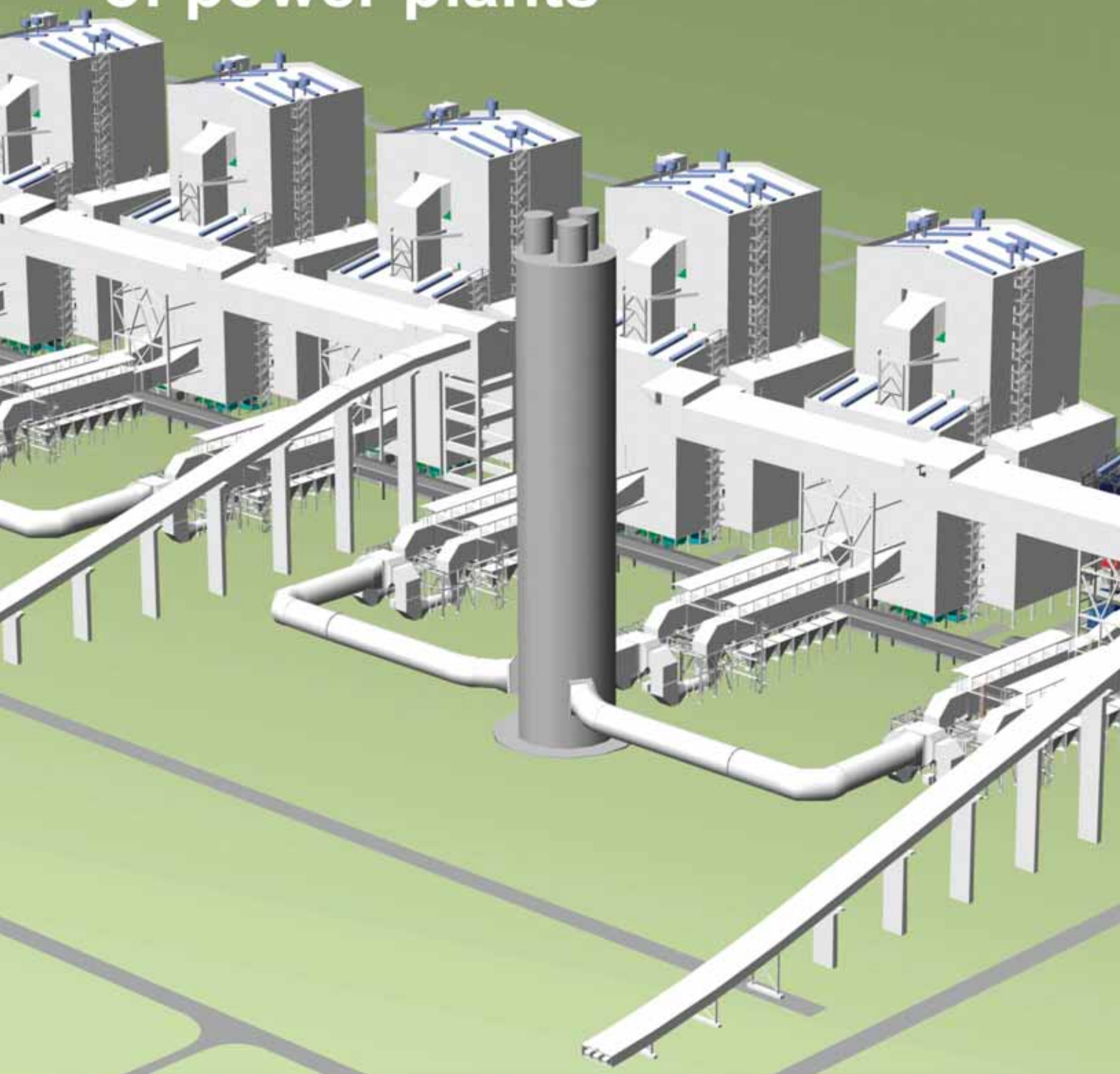
Genrec Engineering (Pty) Ltd. • Tel: +27 11 876 2300 | Fax: +27 11 827 1722  
Cnr Dekema & Niemann Roads, Wadeville, 1428, South Africa  
E-mail: [sales@genreceng.co.za](mailto:sales@genreceng.co.za) • Web: [www.genreceng.co.za](http://www.genreceng.co.za)



A Murray & Roberts Company



# Inspiring the next generation of power plants



Hitachi has expertise going back over a century to build power plants of the calibre South Africa requires to meet the demands of a growing economy. Once in service, Hitachi Power Africa's twelve 800 MW boilers at Eskom's Medupi and Kusile Power Stations will rank among the most advanced and efficient on the African continent – powerful enough to inspire South Africa's economy to reach its full potential.

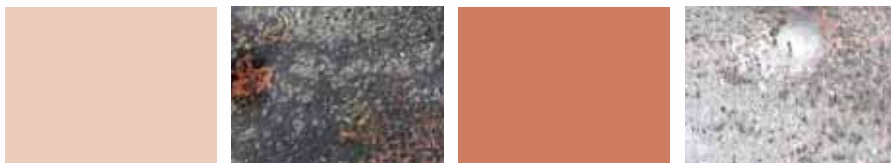
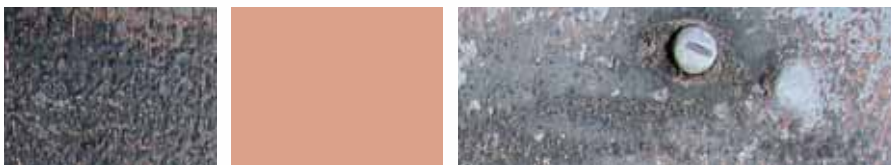
#### **Hitachi Power Africa (Pty) Ltd**

Building 10  
Country Club Estate  
21 Woodlands Drive  
Woodmead, Sandton  
Tel: +27 11 260 4300  
Fax: +27 11 656 3609  
E-mail: [info@hitachi-power.co.za](mailto:info@hitachi-power.co.za)

[www.hitachi-power.co.za](http://www.hitachi-power.co.za)

**HITACHI**  
Inspire the Next





*Residential*

**CATEGORY NOMINATIONS**



## WINNER: RESIDENTIAL

### Rooiels Beach House

Rooiels, Western Cape

*The galvanizing process, transport, on site assembly connection systems and coating application were meticulously considered and impeccably executed by a contractor whose background is Formula 1 motor cars and mechanical stage set design and construction!*

*Photography: George Elphick*

The judging criterion is excellence in the use of structural steel, but for this house everything displays excellence. The judges were intrigued right from the start, from seeing the skeleton rise from the rocks on a previous judging trip a few years ago to viewing the photos that accompanied the entry. It stood out as a winner in all the criteria, it also showed what steel can do when faced with its 'arch enemy' – corrosion!

This house is set on an exposed rocky peninsula amongst the fynbos in Rooiels. The structure can be described as a glazed pavilion raised on a semi-submerged concrete podium that can be sub divided internally (or opened up entirely). Mechanically operable timber solar screens provide an exterior skin to the pavilion. The floating curvilinear roof adds to the minimal sophisticated architecture of the structure that seems to hover in its surroundings.

Why choose a steel frame to construct a building set in an extremely hostile climate in a coastal environment? The architect envisioned a floating light pavilion and the long spans and cantilevers demanded the use of steel as the primary structure. Architecturally, a sense of unlimited connection to the panoramic views, a quality of lightness and desire to open up the internal space entirely to decks on all sides





# 175 years of proven field EXPERIENCE

**Effectively protect steel by hot dip galvanizing and extend its maintenance free life to well in excess of 30 years!**

In the vast majority of applications the corrosion rate of a hot dip galvanized coating is less than 2µm per year. Coating thickness achieved on structural steel averages about 100µm.



In some aggressive marine and polluted industrial applications, the additional barrier protection provided by a duplex coating (hot dip galvanized plus paint), together with the sustained sacrificial protection performance provided by the hot dip galvanized coating will invariably solve most steel protection problems.

For further information on our members and general corrosion advice, contact:

Quality House, Unit U4, St. Christopher Road, St. Andrews, Bedfordview  
P.O. Box 2212 Edenvale 1610 Tel: (011) 456-7960 Fax: (011) 454-6304  
hdgasa@icon.co.za Website: [www.hdgasa.org.za](http://www.hdgasa.org.za)

Cape Town: Tel: (021) 797-4735 Fax: 086 612 7284 [terry@hdgasa.org.za](mailto:terry@hdgasa.org.za)

**HOT DIP  
GALVANIZERS  
ASSOCIATION**  
SOUTHERN AFRICA







of the house, corroborated the use of steel. The structure is a composite of tubular and universal sections which have been crafted to produce a skeletal frame wholly integrated into the fabric of the building and able to withstand wind speeds of up to 250km/h.

### project team

**Developer/Owner:**

Upbeat Properties 167 (Pty) Ltd

**Architect:**

Elphick Proome Architects Inc.

**Structural Engineer:**

Linda Ness Associates

**Project Manager:**

Elphick Proome Architects Inc.

**Main Contractor:**

Brandbild (Pty) Ltd

**Steelwork Contractor:**

Apocalypse Mechanical Monsters

**Detailers/Detailing Company:**

Apocalypse Mechanical Monsters

**Corrosion Protection:**

Cape Galvanising Consolidated (Pty) Ltd

**Corrosion Protection Consultant:**

Hot Dip Galvanizers Association of Southern Africa

**Interior Designer:**

Elphick Proome Interiors (Epi)

Steel was the material of choice but how do you protect it against this extreme corrosive environment? With a back-to-back corrosion protection guarantee for the client in mind, a team was brought together around the design table. Terry Smith from the Hot Dip Galvanizers Association of Southern Africa, together with the galvanizer, paint supplier and the fabricator presented a 15 year guarantee for the duplex system as installed. The unusual guarantee satisfied a somewhat perturbed NHBRC, who referenced that 316 stainless steel was perhaps the only metal suitable for the site.

This project was the biggest galvanizing undertaking in South Africa at the time in terms of member size with the biggest members sized to fit into the largest galvanizing bath available. All cantilevered sections were double dipped in the galvanizing process. There are no visible bolt joints in the expressed steelwork structure as all junctions were welded on site and zinc sprayed to accept a Sigma duplex paint coating.

The structural design was challenging in the large clear span leaps and cantilevered overhangs demanded by the architecture. Careful attention was





## STEEL AWARDS 2013

paid to the deflection criteria over and around glazed sliding/folding perimeter walls, under particularly onerous wind loading conditions. The structural detailing was taken to a stage just short of intricate completion using Tekla 3D environment modelling software.

The floor structure is a composite of a reinforced concrete flat slab, framed by a steel channel, and supported on a regular grillage of steel columns bolted to reinforced stub columns using isolated 316 stainless steel HD bolts (the only stainless steel utilised on the primary structures). The perimeter channel emits a regular skirt sequence of propped and cantilevered tubular frames that support the perimeter timber slatted veranda. Tubular sections were used specifically in the outdoor environment to minimise the corners and heels associated with accelerated corrosion of angular hot rolled sections.

The steel columns extend uninterrupted up to the ceiling plane where they are framed by a 'Toblerone Vierendeel' truss that rings the house and ultimately forms a glazed clerestory. Off this truss ring, springs another series of cantilevered frames which emulate the veranda below and form a framework for the mechanical shutters, and a narrow skirt of cladded roof in which all of the services are hidden.

The galvanizing process, transport, on site assembly connection systems and coating application were meticulously considered and impeccably executed by a contractor whose background is Formula 1 motor cars and mechanical

stage set design and construction! The result is an extraordinary, innovative house which has taken more than four years to complete.


### JUDGES COMMENT

by Heather Dodd representing the South African Institute of Architects (SAIA)

This house is an exploration of the use of steel and glass with sophisticated detailing.

This steel framed house sits floating above the Rooiels promontory. It is designed as a long thin glass box with a timber deck wrapping around its exterior. Internally the box is divided by bathroom pods and sliding doors which separate the living spaces from the bedroom areas.

The carpentry is detailed to perfection. The steel structure is integral to the architectural design as it is exposed in areas and spatially delineates the space.

This is a project that just exudes excellence, something we have come to expect from the work of the professional team involved. 



Cradlestone Mall – Armadillo roof structure

**SERVING THE STRUCTURAL STEEL INDUSTRY FOR THE PAST 70 YEARS**

**CENTRAL WELDING WORKS**  
Structural Steel Contractors

57 Maltzan Street, Pretoria West • P.O. Box 3013 Pretoria 0001 • Tel.: (012) 327-1718/9 • Fax: (012) 327-1727 • Email: [stephen@cwwpta.co.za](mailto:stephen@cwwpta.co.za)



## Residential CATEGORY NOMINATION

Shortlisted

### HOUSE COETZEE

Mooikloof Glen, Pretoria, Gauteng

Developer/Owner:

Ettienne and Lara Coetzee

Architect:

TG Architects + Interiors

Structural Engineer:

P Design cc

Quantity Surveyor:

LW QS, QPC Consulting

Main Contractor:

Anrique Plant & Civil Works

Steelwork Contractor/s:

Steel Scheme



Photography: Thomas Gouws



## Residential CATEGORY NOMINATION

Shortlisted

### HOUSE VAN ANTWERPEN

Midstream, Olifantsfontein, Gauteng

Developer/Owner:

Ivan and Engela van Antwerpen

Architect:

Engela van Antwerpen

Structural Engineer:

Wally Haese

Project Manager:

Engela van Antwerpen

Steelwork Contractor/s:

WJS Steelworks



Photography: Ivan van Antwerpen



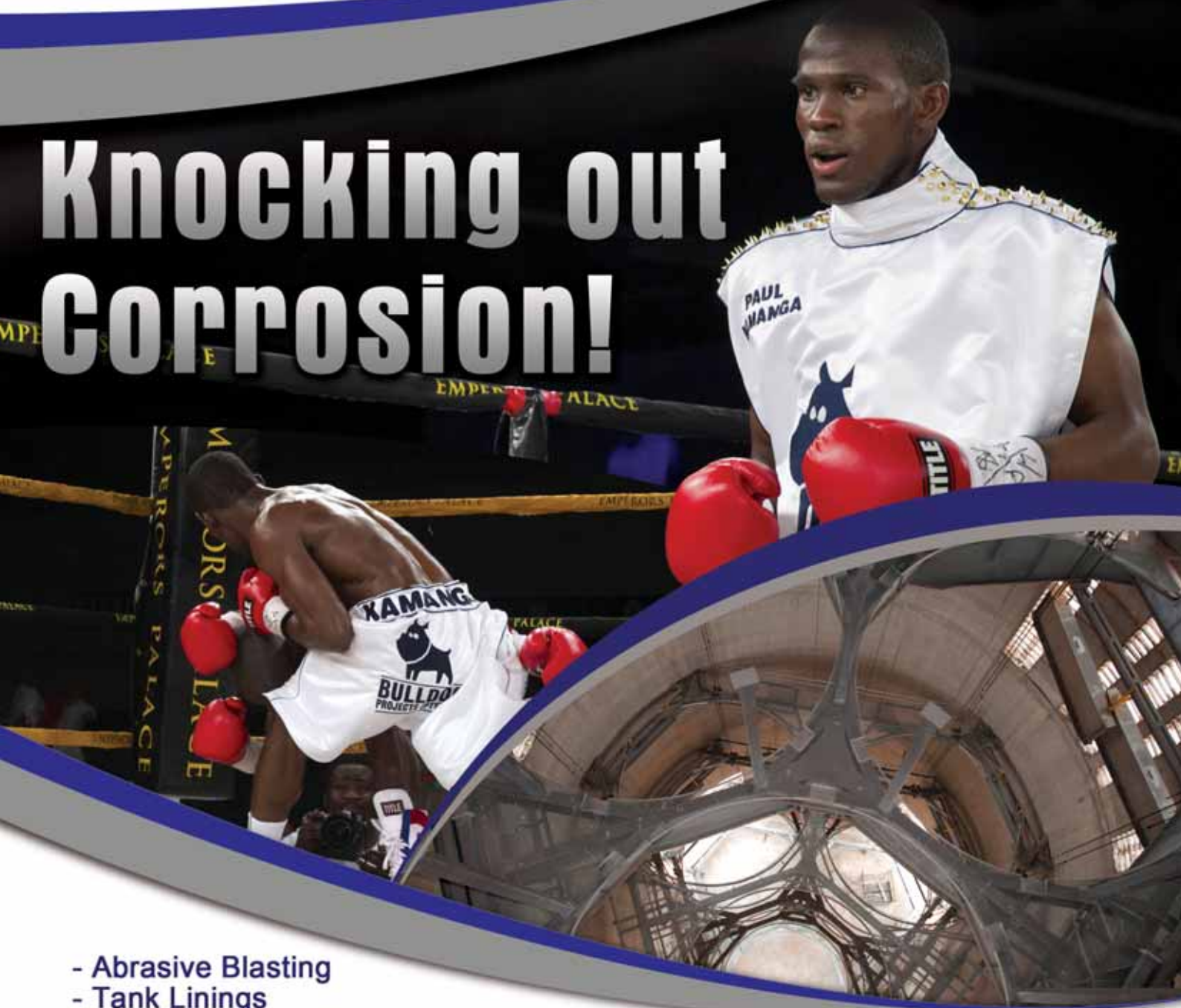


# BULLDOG PROJECTS (PTY) LTD

2010/007276/07



## Knocking out Corrosion!



- Abrasive Blasting
- Tank Linings
- Corrosion Protection
- Industrial Painting
- Duplex Coatings
- Shop Coatings
- Site Coatings
- Maintenance Painting
- Epoxy Flooring
- Tape Wrapping

**Mike Book**

Tel: (011) 825 1070

Fax: (011) 825 7832

PO Box 82741

Southdale 2135

[www.bulldogprojects.co.za](http://www.bulldogprojects.co.za)



# STEEL AWARDS 2013

## Residential CATEGORY NOMINATION

Shortlisted

### HOUSE JONES

Hurlingham, Johannesburg, Gauteng

Developer/Owner:

Ivor and Virginia Jones Family Trust

Architect and Principal Agent:

Environment Response Architecture – ERA Architects cc

Structural Engineer:

Ritchie Midgley Consulting Engineers (Pty) Ltd

Quantity Surveyor:

Afri-QS cc

Main Contractor:

3 Oaks Property Development cc

Steelwork Contractor/s:

Spiral Engineering cc



Photography: Leon Krige - Fluide



### Connect your business with StruM.I.S

StruM.I.S is a dedicated management information and production system for steelwork fabricators.

Leading steelwork fabricators connect their business resources and obtain time, cost and process savings for greater efficiencies, with traceability and greater productivity leading to increased profitability.

Now is the time to invest in your resources, enhance your core competences and gain competitive advantages!

+27(0) 87 150 5556

[www.strumis.com](http://www.strumis.com)

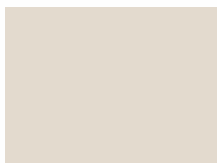
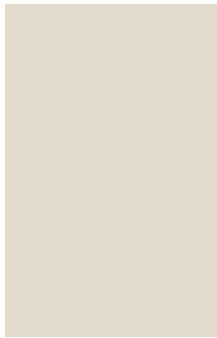
Scan here to see our virtual tour



### BENEFITS

- ✓ Increased productivity and profitability
- ✓ Time and materials cost savings
- ✓ Improved accuracy and error reduction
- ✓ Decision making with real time facts
- ✓ Integrated workflow for greater efficiency
- ✓ Automation of repetitive tasks
- ✓ Potential for overhead reduction
- ✓ Project traceability for quality control





*Tubular Steelwork*

**CATEGORY NOMINATIONS**







## WINNER: TUBULAR STEELWORK

### Standard Bank of South Africa: New Office Facility, Rosebank

Rosebank, Gauteng

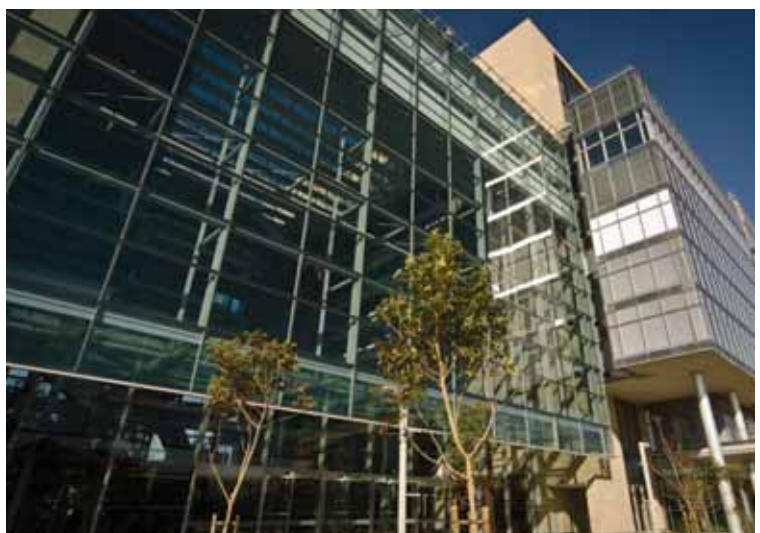
*The north-south atrium is fantastically transparent when viewed from faraway suburbs as well as from within and achieves the transparency the architect was seeking. The strength and stiffness of tubular steelwork was instrumental in achieving this.*

*Photography: Johnny Taute*

The Standard Bank Rosebank building, known as 30 Baker Street, is located on the corner of Baker and Oxford Roads in Rosebank, Johannesburg. The building acts as a southern gateway to the Rosebank precinct and has two tower blocks above ground and six parking basements below ground with a public landscaped space around its periphery to the north. The bank had a need to diversify its property portfolio and Rosebank was an obvious choice with its great connectivity to both motorways and the Gautrain rail system.

The architectural vision was for an institutional building with a transparent exterior that reflected Standard Bank's desire for transparency with its client base. Steel and glass played an instrumental role in ensuring that this was achieved. Although open web sections have been used in the construction of the roof elements that form a modern take on a traditional 'saw tooth roof form', tubular steelwork in the form of principally square hollow section tubular members have been used extensively in the construction of the facades and atria.

Three large atria can be found around the periphery of the building. A very large atrium acts as the gateway to the building housing all the facilities to





# TASS

ENGINEERING (PTY) LTD

**Our steel is building the nation.  
Our quality is building our reputation.**

TASS Engineering has been actively involved in structural and architectural steel fabrication and erection for more than four decades.

**Current projects:**

- Sandton Atrium on 5th Cladding - Liberty Properties
- Medupi Coal & Ash Terrace - ELB
- Cradlestone Mall - Sasol Pension Fund
- Silverstone Street Warehouse (40 000m<sup>2</sup>, 850t) - Capital Property Fund (Pty) Ltd
- Forest Hill Shopping Centre (1 000t) - Billion Property Developments (Pty) Ltd
- Mayfield Shopping Centre (350t) - Investec / AM Developments
- St Helena DVOR - Thales
- Shuttle Conveyor - DemcoTECH - Khumba Iron Ore - Sishen Mine
- Tunney Ridge Business Park Warehouses and Offices
- Chipkins Bakery New Packaging Line - Tetrapak - Bidfood Technologies (Pty) Ltd





## STEEL AWARDS 2013



accommodate arriving guests, clients and employees and is located on the north-south axis of the building. The facade/structural engineers wanted to incorporate very large panes of glass in the end walls of the atria so that the external envelope gridding was large in proportion, thereby

reflecting the large space that was the atrium itself. Because of steel's superior stiffness and strength over aluminium it was possible to use nearly a full standard stock sheet of glass in the gridding of the facades. This gridding is also successfully applied in the eastern and western atria.

The north-south atrium is fantastically transparent when viewed from faraway suburbs as well as from within and achieves the transparency the architect was seeking. The strength and stiffness of tubular steelwork was instrumental in achieving this. In addition, the northern atrium 'hangs' from a giant, storey-deep, steel truss elegantly cross braced and bridging the divide between the eastern and western blocks of the building. This hanging steelwork grid then supports the end wall glazing of the atrium and allows elegantly crafted and glazed steel entrance canopies and covered regions to float beneath the northern facade.

Above the atria are elegantly crafted saw tooth roof trusses with repetitive parallel chord lattice girders. These bring a degree of repetitive engineering to bear on the problem of bridging the roof scape divide between the eastern wing and the western wing of the building. These lattice girders lie in the vertical planes of the saw tooth form and have been carefully detailed to allow glazing to be installed against their face so that the sky is virtually brought right inside the atriums of the buildings. The eastern and western wings of the building are of similar, all be it smaller, construction.

Structural steel has been used successfully in many shapes and forms throughout the building in canopies, staircases and slender supporting steel columns to support slab structures towering many levels above the atrium floor.

All architectural, structural, civil and facade documentation was produced in a fully three dimensional environment utilising cutting edge three dimensional CAD technologies to create a virtual digital model of the building.

The building has achieved a Five Star Design rating with the Green Building Council and intends on achieving a similar rating for its 'as built' operation. The building generates its own power with a tri-generation plant and has many innovative features too numerous to mention. The external envelope facade is

### project team

**Developer/Owner:**

Standard Bank of South Africa

**Architect:**

GLH Architects

**Structural Engineer:**

Pure Consulting (Pty) Ltd

**Quantity Surveyor:**

Norval Wentzel Steinberg (Pty) Ltd

**Project Manager:**

Standard Bank Properties

**Main Contractor:**

Wilson Bayly Holmes – Ovcon (WBHO)

**Steelwork Contractor/s:**

Tass Engineering (Pty) Ltd

**Steelwork Subcontractor (part of the central atrium roof trusses):**

Omni Struct Nkosi (Pty) Ltd

**Detailers/Detailing Company:**

Precise Structural Modelling (Pty) Ltd

**Erector:**

On Par Steel



cutting edge technology with the use of a triple glazed facade with active blinds in the cavity between the triple glazing, making it a modern, highly energy efficient and transparent external envelope to the building.

The client is delighted with the end result and is proud and committed to the sustainability principles embedded in the design of the building.

### JUDGE'S COMMENT

by Franco Mordini representing the Association of Steel Tube and Pipe Manufacturers of South Africa (ASTPM)

The two entries that stood out amongst a number of tubular entries were the upgrade to the Greenpoint Athletics Stadium and the Standard Bank building in Rosebank. These entries used tubes in an aesthetically pleasing and effective manner both from an architectural and engineering point of view. Quality of fabrication also impressed.

But the Standard Bank building was the clear winner in the end. The tubular frame that supports the glass facade was well designed and constructed. The member size was carefully chosen to ensure good quality drawn tube. Key here was good communication between the design engineer, fabricator and suppliers.

The steel compliments the glass by providing a light framework so that maximum light is allowed into the atrium. The natural light lights up a magnificent hanging



map of Africa by Marco Cianfanelli. The impressive atrium is a warm and inviting meeting place for visitors to Standard Bank.

Well done to the project team! 

## Tubular steel - functional, yet aesthetically pleasing

### A 21st Century solution



Tel: +27 (0)11 823 2377 Fax: +27 (0)86 777 7723 Email: [astpm@astpm.com](mailto:astpm@astpm.com) Website: [www.astpm.com](http://www.astpm.com)

Members of the Association of Steel Tube and Pipe Manufacturers of South Africa





## STEEL AWARDS 2013

### *Tubular Steelwork* CATEGORY NOMINATION

Shortlisted

#### NATALSPRUIT HOSPITAL

Vosloorus, Gauteng

Developer/Owner:

Gauteng Department of Infrastructure Development

Lead Architect:

Osmond Lange Architects & Planners (Pty) Ltd

JV Architects:

Ikemeng Architects, Shabangu Architects

Structural Engineer:

Goba (Pty) Ltd

Quantity Surveyors:

Lindile Mteza & Associates, Koor Dindar Mothei

Quantity Surveyors (Pty) Ltd, Theba Consultants

Project Manager:

AECOM / BKS (Pty) Ltd

Main Contractor:

Mvela Phanda Basil Read

Steelwork Contractor/s:

Khombanani Steel (Pty) Ltd

Detailers/Detailing Company:

3D-Struct (Pty) Ltd



Photography: Megapix Digital



### *Tubular Steelwork* CATEGORY NOMINATION

Shortlisted

#### NCOME MUSEUM AND BRIDGE

Blood River, KZN

Developer/Owner:

Department of Arts and Culture

Architect:

LVDW Architects Newcastle

Structural Engineer:

Anderson Vogt Consulting Dundee

Quantity Surveyor:

B.Ramgoolan & Associates

Project Manager:

LVDW Architects Newcastle

Main Contractor:

Siyaxhasana Construction

Steelwork Contractor/s:

Steelcom Engineering

Detailers/Detailing Company:

SG Detailing

Corrosion Protection:

Voight and Willecke





# **KHOMBANANI STEEL**

**Our quest is lasting impressions**



**Specialist structural and architectural steelwork contractor.**

**Level 2 contributor and value added supplier.**

**Tel: +27 11 394 8780 • Fax: +27 11 975 0294 • E-mail: [marten@khombanani.co.za](mailto:marten@khombanani.co.za)**



# STEEL AWARDS 2013

## Tubular Steelwork CATEGORY NOMINATION

Shortlisted

### GREEN POINT ATHLETICS STADIUM REFURBISHMENT

Cape Town, Western Cape

Developer/Owner:

City of Cape Town

Architect:

Louis Karol & Point Architects

Structural Engineers:

AECOM, ILISO Consulting (Pty) Ltd, Hatch / Goba Consulting (Pty) Ltd, Henry Fagan and Partners, KFD Wilkinson Consulting Engineers (Pty) Ltd, GIBB

Quantity Surveyor:

AECOM / Mahlathi Liebetrau

Project Manager:

Ariya Projects Managers, Mitchell du Plessis Associates (MDA), AECOM

Main Contractor:

Filcon Projects Cape

Steelwork Contractor/s:

Triomf Staalwerke

Roof Sheeting Contractor:

Youngman Roofing

Electrical Engineers:

GIBB



## TOMORROW DELIVERED

IN A WORLD THAT'S BECOMING EVER MORE COMPLEX, AECOM SEES THE BIGGER PICTURE AND MAKES CONNECTIONS.

BUILDING ENGINEERING  
CIVIL & INFRASTRUCTURE  
RESOURCES AND INDUSTRY  
CONSTRUCTION SERVICES



AECOM is a global leader in providing fully integrated professional technical and management support services for a broad range of markets. From transportation, energy and water systems, to enhancing environments and creating new buildings and communities, our vision is to make the world a better place.

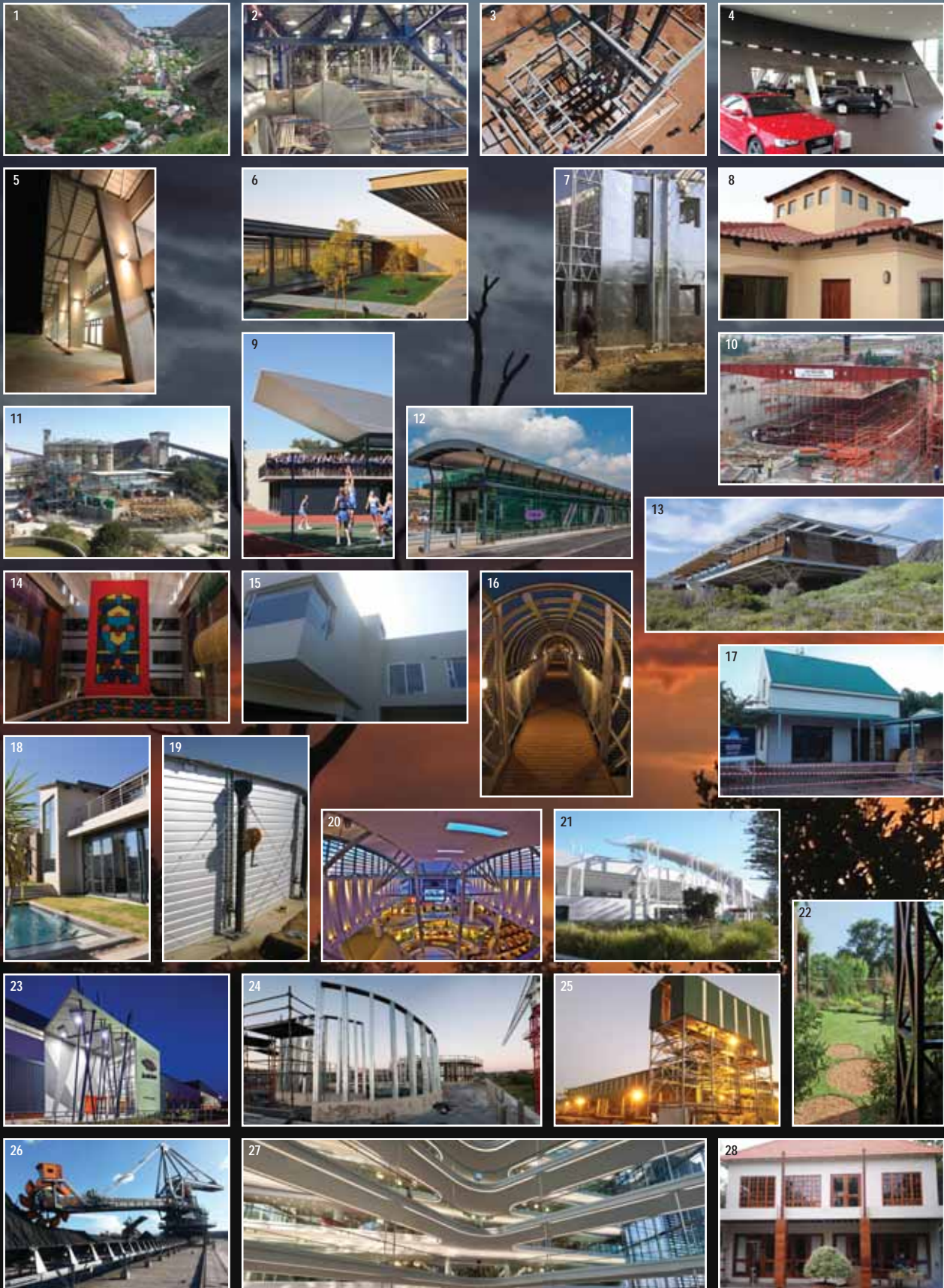
With approximately 45,000 employees round the world, we provide a blend of global reach, local knowledge and innovation that makes AECOM a leader in all of the key markets that we serve. A *Fortune* 500 Company, AECOM serves clients in approximately 140 countries and has an annual revenue in excess of \$8.0 billion.

According to Engineering News-Record's\* 2012/13 rankings, AECOM is:

- First Overall Top 150 Global Design Firm
- First in Pure Design
- First in Transportation
- First in General Building
- First in Water
- First in Marine and Port Facilities

\*Engineering News-Record is the most recognized publication in the engineering and construction industry. The rankings are based on annual revenue in the United States and abroad, and are further divided into specific market categories.

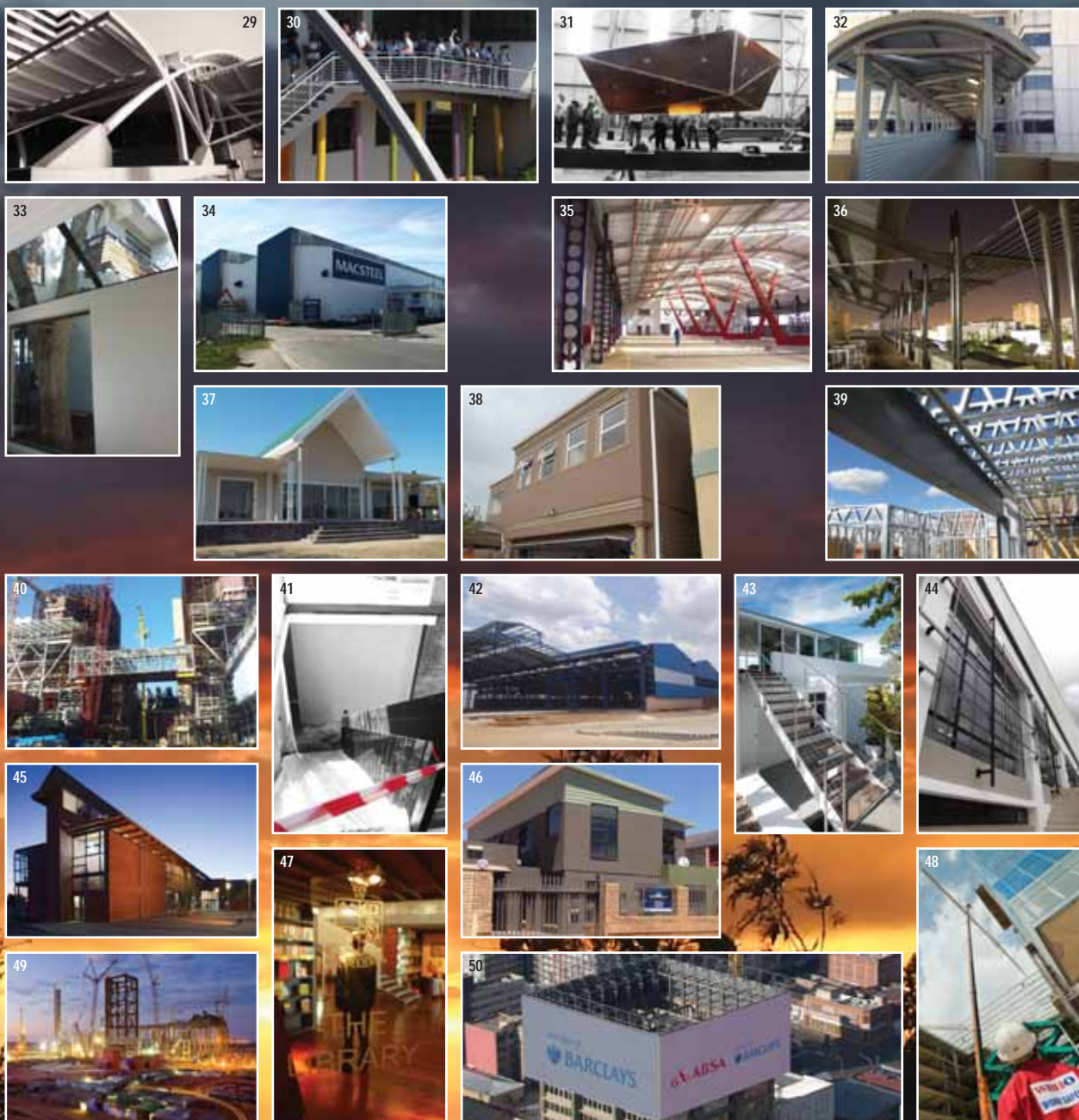




# 2013 Steel Awards Photo Competition

## ENTRIES





- 1 Saint Helena Workers Village
- 2 Paarman Foods New Factory (Photo: Rod Holmes)
- 3 Namakwa Sands Expansion Project – Foundation portion (Photo: Ben Zentgraf)
- 4 NTT Audi New Showroom – East London (Photo: Bjorn Kahler)
- 5 Department of Public Works, District Office Mkuze (Photo: Craig Hudson)
- 6 House Coetzee (Photo: Thomas Gouws)
- 7 House Enslin, Xanadu Estate, Hartebeespoort
- 8 House Laurens (Photo: Charl van Zyl)
- 9 New Sports Facility for Afrikaanse Hoër Meisieskool Pretoria (Photo: Mathews & Associates Architects cc)
- 10 Telesure Headquarters
- 11 Elution Plant Gold Room
- 12 BRT Tshwane (Photo: Megapix Digital)
- 13 Rooiels Beach House (Photo: George Elphick)
- 14 Natalspruit Hospital (Photo: Megapix Digital)
- 15 House Badenhorst (Photo: Charl van Zyl)
- 16 Ncome Museum and Bridge
- 17 House Webb (Photo: Charl van Zyl)
- 18 House Lavarone – Waterfall Village
- 19 SBS 3.3ML Sheet Steel Water Tank (Photo: Jim Martin)

- 20 Tyger Valley Centre Master Development Phase 1 (Photo: Chris Frylinck)
- 21 Green Point Athletics Stadium Refurbishment
- 22 House Jones (Photo: Leon Krige – Fluide)
- 23 Illovo Sugar – New National Distribution Warehouse (Photo: Grant Pitcher Photographer)
- 24 Corlett Drive – Commercial Offices
- 25 Belt Filter and Cooling Systems for Tronox Namakwa Sands
- 26 Grootegeluk Medupi Reclaimer
- 27 Alexander Forbes – 115 West Street, Sandton (Photo: Andrew Bell)
- 28 House De Beer (Photo: Charl van Zyl)
- 29 The University of Pretoria: Engineering 1 Study Centre (Photo: Aurecon)
- 30 Grantleigh Titanium Learning Centre (Photo: Craig Hudson)
- 31 Nellmapius Bridge (Photo: Pieter J Mathews)
- 32 Mall of Rosebank Refurbishment
- 33 The Tree House – Addition to House Barratt Phase 01
- 34 Additional Bays and Offices for VRN - Macsteel Trading Cape Town (Photo: Mitchell du Plessis Projects (Pty) Ltd)

- 35 BRT Dobsonville – Head Office and Workshops
- 36 University of Pretoria New Plant Sciences Complex (Photo: Lourens Uitenwarde)
- 37 House Pepler (Photo: Charl van Zyl)
- 38 House Sewchurren (Photo: Charl van Zyl)
- 39 House Mistry – Waterfall Estate
- 40 Medupi Power Station Coal Conveyors (Photo: Ed Jardine)
- 41 House van Antwerpen (Photo: Ivan van Antwerpen)
- 42 Macsteel Tube and Pipe Value Added Facility
- 43 Rooftop Studio (Photo: Peter Maltbie Photography)
- 44 Additions to Existing Hall for Afrikaanse Hoër Meisieskool Pretoria (Photo: Mathews & Associates Architects cc)
- 45 Unisa Phase 2 (Photo: Dave Southwood)
- 46 House Zayed Extension (Photo: Charl van Zyl)
- 47 King Edward VII School New Library and Museum (Photo: Quintin Venter)
- 48 Standard Bank of South Africa – New Office Facility, Rosebank (Photo: Jamie Thom/ WBHO)
- 49 Medupi Power Station Main Frame and Boiler Grid Supports (Photo: Ed Jardine)
- 50 Project Lumen (Photo: Kate Bradley)



## STEEL AWARDS 2013



Andrew Bell.

## WINNER: PHOTO COMPETITION

### Alexander Forbes – 115 West Street, Sandton

Photographer: Andrew Bell

[andrewbell@paragon.co.za](mailto:andrewbell@paragon.co.za) / +27 (0)11 482 3781

This is the third year of the Steel Awards Photo Competition and the second time that an architect wins the competition. Andrew Bell graduated with a master's degree in architecture from Wits in 2009 and has worked at Paragon Architects since. He is involved in both conceptual design, as well as the delivery of buildings on site.

He says: "I have always had a fascination with big buildings and the possibilities of commercial architecture. Through photography, I have been documenting the urban landscape and commercial buildings for the last 10 years, gradually turning this passion into a profession. Having an 'ADD' personality I have embarked on a part time master's degree in property development further augmenting my skill set and understanding for commercial buildings."

About the winning photo: Crisp flying walkways seamlessly connecting alternating environments, calmly bringing human activity through the multivolume space all with a sense of style.

**Cadex SA**  
 **TEKLA**  
 Photo competition sponsor



# Tekla BIMsight

Free tool for construction  
design coordination

Free download  
[teklabimsight.com](http://teklabimsight.com)



## Combine

*Open models from  
any BIM software  
and combine them  
to a single project.*



## Check

*Avoid conflicts on-site  
by running automated  
clash checks between  
all project models.*



## Communicate

*Manage changes  
and communicate  
with everyone in  
your project.*

Contact **Cadex SA**,  
Tekla's Partner for Southern Africa  
[info@CadexSA.com](mailto:info@CadexSA.com)  
[www.CadexSA.com](http://www.CadexSA.com)



**TEKLA®**  
A TRIMBLE COMPANY



STEEL AWARDS 2013

## RUNNERS-UP: PHOTO COMPETITION



**Tyger Valley Centre Master Development Phase 1**

Photographer: Chris Frylinck



**Illovo Sugar – New National Distribution Warehouse**

Photographer: Grant Pitcher Photographer

Few people can claim to have a longer relationship with the steel industry in South Africa, and with the Southern African Institute of Steel Construction than John Barnard. Few people can claim to have served our industry with more loyalty and enthusiasm than John.

Including his five years at University, he was on the personnel list of Iscor and ArcelorMittal for a total of 36 years before he became an employee of the SAISC seven years ago. And he is still going strong, clearly aiming for a target of 50 years.

John studied civil engineering at the University of Pretoria with an Iscor bursary, and spent his first year as an engineer in Sishen during the original phase of construction of the mine. After doing his B.Eng (Civil) Honours, his career developed in the marketing field, starting with being instrumental in establishing Iscor's Market and Product Development Department. He was involved with getting such iconic products as Chromadek and Cor-Ten widely accepted and in the process moved the staid Iscor to launch its first TV advertisement for a product. He was the architect of Iscor's product data sheet system that played such an important role in making the industry quality conscious. Aside from his involvement in the product development and marketing of steel for the automobile industry his focus was always on the use of steel in construction. In the process he was involved in the development of Iscor's heavy sections range (I 610 x 229), as well as the IPE and IPE AA range, and Iscor's parallel flanged channels, of which he was the designer.

John's fond memory of that time was the launch of the Cor-Ten steel bridge over the M1 Highway at Buccleuch, when he got special dispensation from the traffic department to throw a huge 'braai' for consulting engineers right next to the freeway to view the swinging of the girders over the road.

He represented Iscor/ArcelorMittal on a number of local and international committees, and regularly attended conferences overseas.

But we want especially to celebrate John for his achievements with respect to the SAISC. He was chairman of the SAISC Steel Construction Development Programme for many years – the group that initially decided to launch Steel Awards. In fact, for some ten years the Steel Awards function consisted of no



John and his wife Denise.



## HONORARY LIFE MEMBERSHIP: JOHN BARNARD

By Dr Hennie de Clercq,  
Retiring Chief Executive Officer,  
SAISC

*Ultimately though, John will be remembered as 'Mister Light Steel Framing of South Africa'. He left ArcelorMittal in 2006 to become Director of SASFA, the newly-formed association to serve the light steel frame building industry. From that moment his professional life and achievements became synonymous with that of SASFA and if that is the measure, John has been inordinately successful.*



## HONORARY MEMBERSHIP



John talking about his favourite subject (LSFB!) during the SteelFuture Conference.


more than a cocktail party at which John gave a slide show of the entries and announced the winners, elected by a judging committee very similar in composition to the current. He admits (now) that, in order to fast-track the development of the awards function, for the first Steel Awards the committee chose the winner (the Sun City Super Bowl) and selected two runners up, without calling for any further entries!


John was a member of the SAISC Board for 22 years, representing Iscor, and Chairman in 2004 to 2005.

Ultimately though, John will be remembered as 'Mister Light Steel Framing of South Africa'. He left ArcelorMittal in 2006 to become Director of SASFA, the newly-formed association to serve the light steel frame building industry. From that moment his professional life and achievements became synonymous with that of SASFA and if that is the measure, John has been inordinately successful. Since its formation, SASFA has succeeded in having LSFB accepted as an alternative method of construction, yielding better and more environmentally friendly buildings than the traditional masonry. The SABS has published an LSFB standard, local authorities have accepted it as a sound construction method, and banks have agreed to grant bonds. Many engineers, architects, building inspectors and builders have been beneficiaries of SASFA's educational and training programmes. Many more small contributions (the latest of which a 13-part TV programme featuring light steel framing) have added up to make LSFB a rapidly-growing, exciting feature of our steel industry.




Motorcycle touring is a hobby they both enjoy. Denise now rides her own bike.

John Barnard has for many years been a great servant of our industry, staunchly supported by his wife, Denise. And one only has to note that they have lived in their steel-framed house in Pretoria for some 36 years now, bringing up their two sons Stephen (30) and Kevin (23) and their daughter Desre (27), to know that this is a man on whose loyalty and dedication you can always trust. 

  
**ArcelorMittal**

### Fabric of life



We believe steel has a key role to play in the world. From ships to skyscrapers, much of the fabric of life is made from steel. We also believe we should manage our growth with future generations in mind by being a sustainable business that is both profitable and responsible.

**transforming tomorrow**

If you need more information contact us by e-mail at [chromadek@arcelormittal.com](mailto:chromadek@arcelormittal.com) or tel 016 889 4870 or [www.arcelormittal.com/southafrica](http://www.arcelormittal.com/southafrica)

**Peddinghaus**

# ANGLE PROCESSING

**SUCCESS**



## ANGLEMASTER-HD



Punching



Measuring



Stamping



Scribing



Shearing

- Triple tool punch press with three speed SmartCylinder® technology
- Single cut shear with three speed SmartCylinder® technology
- SignoMat® part stamping system
- SignoScript® carbide scribing system
- Minimum Quantity Lubrication (MQL) system
- New Siemens 840d Solutions Line CNC Control with 19" screen
- Roller Feed® measurement system for continuous feed production

www.peddinghaus.com | patrick-pereira@peddinghaus.com | + 27 82 821 69 74

web

email

phone





# MEMBERSHIP

## SAISC MEMBERSHIP

### STEEL PRODUCERS

#### ArcelorMittal South Africa

Representative: Johnny Venter  
Tel: +27 16 889 3419  
Fax: +27 16 889 3487  
johnny.venter@arcelormittal.com  
www.arcelormittal.com

#### Cape Gate (Pty) Ltd

Representative: Martin Friedman  
Tel: +27 16 980 2121  
friedmnm@capegate.co.za  
www.capegate.co.za

#### Columbus Stainless (Pty) Ltd

Representative: Dave Martin  
Tel: +27 13 247 9111  
martin.dave@columbus.co.za  
www.columbus.co.za

#### EVRAZ Highveld Steel & Vanadium

Representative: Kefilwe Mothupi  
Tel: +27 13 690 9589  
Fax: +27 13 690 9589  
kefilwemo@evrazhighveld.co.za  
www.evrazhighveld.co.za

#### Scaw Metals Group

Representative: Chris Booysen  
Tel: +27 11 842 9364  
Fax: +27 11 842 9705  
millsales@scaw.co.za  
www.scaw.co.za

### STEELWORK CONTRACTORS

#### Eastern Cape

##### Uitenhage Super Steel cc

Representative: Ginkel Venter  
Tel: +27 41 922 8060  
Fax: +27 41 992 5923  
ginkel@uss.co.za

#### Gauteng

##### A Leita Steel Construction (Pty) Ltd\*

Representative: Claudio J Leita  
Tel: +27 12 803 7520  
Fax: +27 12 803 4360  
claudio@aleita.co.za  
www.aleita.co.za

##### Aveng Steel Fabrication\*

Representative: Mike Dos Santos  
Tel: +27 41 871 4111  
Fax: +27 41 871 4141  
mdossantos@grinaker-lta.co.za  
www.avenggrinaker-lta.co.za

##### Bankos Distributors cc

Representative: Greg McCree  
Tel: +27 11 026 8359  
gregm.bmg@vodamail.co.za  
www.bmgprojects.co.za

##### Bessemer (Pty) Ltd

Representative: Fritz Hoogendyk  
Tel: +27 11 762 5341  
Fax: +27 11 762 5345  
bessemer@iafrica.com

##### Betterect (Pty) Ltd

Representative: Thomas Siebert  
Tel: +27 11 762 5203  
Fax: +27 11 762 5286  
thomas@betterect.co.za  
www.betterect.com

##### Boksan Projects cc

Representative: L Boksan  
Tel: +27 11 316 2172  
Fax: +27 11 316 1645  
laszlo@boksan.co.za

##### Branch Engineering (Pty) Ltd\*

Representative: Shannon Van Den Heuwel  
Tel: +27 11 493 1197  
Fax: +27 11 493 7884  
shannon@branchengineering.co.za

#### Cadcon (Pty) Ltd

Representative: Richard Butler  
Tel: +27 12 664 6140  
Fax: +27 12 664 6166  
richbutler@cadcon.co.za  
www.cadcon.co.za

#### Carbon Steel Fabricators

Representative: Duncan Viljoen  
Tel: +27 16 986 9200  
Fax: +27 16 986 0700  
duncan.viljoen@vbvholdings.com  
www.vbvholdings.com

#### Central Welding Works

Representative: Stephen Horwitz  
Tel: +27 12 327 1718  
Fax: +27 12 327 1727  
stephen@cwvpta.co.za

#### CIS Engineering (Pty) Ltd

Representative: Christo Marais  
Tel: +27 16 422 0082  
Fax: +27 16 422 0975  
christo@cisengineering.co.za  
www.cisengineering.co.za

#### Concor Engineering

##### (a Division of Concor Holdings (Pty) Ltd)\*

Representative: Mile Sofijanic  
Tel: +27 11 249 7800  
Fax: +27 11 249 7984  
mile.sofijanic@murrob.com  
www.engineering.concor.co.za

#### Ferro Eleganza (Pty) Ltd

Representative: Chris Narbonese  
Tel: +27 12 803 8035  
Fax: +27 12 803 5645  
chris@ferroe.co.za  
www.ferroe.co.za

#### Genrec Engineering

##### A division of Murray & Roberts Ltd\*

Representative: Mike Borello  
Tel: +27 11 876 2308  
Fax: +27 86 765 0363  
mike.borello@murrob.com  
www.genreceng.co.za

#### IVMA Engineering cc

Representative: Mauro Munaretto  
Tel: +27 11 814 3124  
Fax: +27 11 814 1505  
ivma@ivma.co.za  
www.ivma.co.za

#### Khombanani Steel (Pty) Ltd

Representative: Tim Tasioulas  
Tel: +27 11 975 0647  
Fax: +27 11 970 1694  
accounts@khombanani.co.za

#### Linrose Engineering Gauteng (Pty) Ltd\*

Representative: Jorge Perelira  
Tel: +27 11 827 0314  
Fax: +27 11 827 0878  
linrose@icon.co.za  
www.linrose.co.za

#### Louwill Engineering (Pty) Ltd

Representative: Deon Kotzé  
Tel: +27 11 818 5186  
Fax: +27 11 818 5185  
deon@louwill.co.za  
www.louwill.co.za

#### MAC Engineering cc

Representative: Mino Carniel  
Tel: +27 11 814 1834  
Fax: +27 11 814 6620  
mino@maceng.co.za  
www.maceng.co.za

#### Magnet Engineering (Pty) Ltd

Representative: Paul G Catalo  
Tel: +27 11 908 3500  
Fax: +27 11 908 2723  
paulocatalo@snet.co.ao  
www.magnetengineering.co.za

#### Malitech Engineering

Representative: Sipho Malinga  
Tel: +27 16 931 2069/ 2072  
Fax: +27 16 931-2255  
smalinga@malitech.co.za  
www.malitech.co.za

#### Midvaal Structures (Pty) Ltd

Representative: Christo Van Dyk  
Tel: +27 16 365 5961  
Fax: +27 16 365 5951  
christo@steelstructures.co.za  
www.steelstructures.co.za

#### MM & G Mining & Engineering Services (Pty) Ltd

Representative: Dawie Vos  
Tel: +27 11 914 4740  
Fax: +27 11 914 4673  
dvos@mmg.co.za  
www.mmandg.co.za

#### MPW Steel Construction (Pty) Ltd

Representative: Paolo Visentin  
Tel: +27 11 887 8430  
Fax: +27 866 856 543  
paolo@sgjuricich.co.za

#### Okirand Construction

Representative: Rowan Forte  
Tel: +27 11 465 8599  
Fax: +27 86 577 9890  
rowan@okirand.co.za  
www.okirand.co.za

#### OmniStruct Nkosi (Pty) Ltd

Representative: Dave van Asche  
Tel: 086 100 6664  
Fax: +27 11 474 7487  
dave@osn.co.za  
www.omnistruct.co.za

#### PH Projects

Representative: Andries Du Plessis  
Tel: +27 11 828 0427  
Fax: +27 11 828 0442  
engela@phgroup.co.za  
www.phgroup.co.za

#### Prospan Structures cc

Representative: David Paola  
Tel: +27 11 440 2116  
Fax: +27 11 440 2135  
david@prospan.co.za  
www.prospan.co.za

#### QM Steel cc

Representative: Quintin Venter  
Tel: +27 11 864 7885  
Fax: +27 86 594 2008  
info@qmsteel.co.za  
www.qmsteel.co.za

#### SASSI Metal Innovations cc

Representative: Ignazio Plumari  
Tel: +27 11 795 4049  
Fax: +27 11 794 4684  
info@sassi-biab.com

#### SE Steel Fabrication (Pty) Ltd

Representative: David J Essey  
Tel: +27 11 953 4584  
Fax: +27 11 660 5855  
sesteel@icon.co.za

#### Sectional Poles (Pty) Ltd\*

Representative: Phil M Koen  
Tel: +27 12 348 8660  
Fax: +27 12 348 9195  
pkoen@sectionalpoles.co.za  
www.sectionalpoles.co.za

#### SMEI Projects (Pty) Ltd

Representative: Sandy Pratt  
Tel: +27 11 914 4101  
Fax: +27 11 914 4108  
apratt@smei.co.za  
www.smei.co.za

#### Spiral Engineering cc

Representative: Colin Kirkland  
Tel: +27 11 474 9119  
Fax: +27 11 474 6528  
colin@spiralengineering.co.za  
www.spiralengineering.co.za

#### Steel Band Construction cc

Representative: Steven Smit  
Tel: +27 44 874 6554  
Fax: +27 44 884 1422  
steelband@icon.co.za

#### Structa Technology (Pty) Ltd

Representative: Hercules Rossouw  
Tel: +27 16 362 9100  
Fax: +27 16 362 3608  
hercules@structa.co.za  
www.structa.co.za

#### Tass Engineering (Pty) Ltd

Representative: Tim Tasioulas  
Tel: +27 11 975 0647  
Fax: +27 11 970 1694  
tim@tasseng.co.za  
www.tass.co.za

#### Tegmul Engineering (Pty) Ltd

Representative: Toby Esterhuizen  
Tel: +27 16 362 2007  
Fax: +27 16 362 1188  
tobie@tegmul.co.za

#### Trentbridge Engineering cc

Representative: David Hunter  
Tel: +27 16 365 5327  
Fax: +27 16 365 5320  
trentfab@intekom.co.za

#### Tudor Engineering & Draughting cc

Representative: Braam Beukes  
Tel: +27 11 914 5163  
Fax: +27 11 914 5165  
tudora@mweb.co.za

#### Van Driel's Steel Construction

Representative: Robby van Driel  
Tel: +27 16 341 6102/5  
Fax: +27 16 341 6685  
vdriel@mweb.co.za

#### Viva Steelfab Engineering (Pty) Ltd

Representative: Collen Gibbs  
Tel: +27 11 454 3405  
Fax: +27 11 454 5694  
colleng@vivaeng.co.za

#### WBHO Services North

Representative: Andrew Breckenridge  
Tel: +27 11 265 4000  
Fax: +27 11 310 3578  
andrewb@wbho.co.za  
www.wbho.co.za

#### KwaZulu-Natal

##### Avellini Bros (Pty) Ltd

Representative: Pietro Avellini  
Tel: +27 31 464 0421  
Fax: +27 31 464 0966  
ravellini@iafrica.com

##### BNC Projects (Pty) Ltd

Representative: Sunthosh Balchund  
Tel: +27 31 902 3777  
Fax: +27 31 902 6798  
balchunds@bncprojects.co.za  
www.bncprojects.co.za

##### Churchyard & Umpleby\*

Representative: Keith Ball  
Tel: +27 31 701 0587  
Fax: +27 31 701 8062  
keith@candu.co.za  
www.candu.co.za

##### Cousins Steel International (Pty) Ltd

Representative: Adam Oldfield  
Tel: +27 31 312 0992  
Fax: +27 31 303 5299  
adam@cousinssteel.co.za  
www.cousinssteel.co.za

**Impact Engineering cc\***

Representative: Douglas Nidd  
Tel: +27 32 947 1054  
Fax: +27 32 947 2017  
impact@saol.com  
www.impacteng.co.za

**Ogilvie Engineering**

Representative: Allan Olive  
Tel: +27 31 700 6489  
Fax: +27 31 700 6488  
ogilvadmin@lantic.net

**PJ Projects**

Representative: Russell Welsh  
Tel: +27 35 751 1006  
Fax: +27 35 751 1016  
russell@pjprojectsrb.co.za  
www.pjprojectsrb.co.za

**Rebcon Engineering (Pty) Ltd**

Representative: Warren Butler  
Tel: +27 31 705 5851  
Fax: +27 31 705 5855  
warren@rebcon.co.za  
www.rebcon.co.za

**Robsteel Structures cc**

Representative: Rob Drysdale  
Tel: +27 32 946 1922  
Fax: +27 32 946 2138  
rob@robsteel.co.za

**Redfab Engineering (Pty) Ltd**

Representative: Jay Reddy  
Tel: +27 31 463 1673  
Fax: +27 31 463 1659  
jay@redfab.co.za

**SHM Engineering cc**

Representative: Ahmed Kadodia  
Tel: +27 31 465 5463  
Fax: +27 31 465 4680  
shmadmin@isweb.co.za  
www.shmeng.co.za

**SpanAfrica Steel Structures (Pty) Ltd\***

Representative: James Pinnell  
Tel: +27 33 346 2555  
Fax: +27 33 346 1242  
pinnell@sai.co.za

**Mpumalanga****B & T Steel\***

Representative: Bryan Wilken  
Tel: +27 13 665 1914  
Fax: +27 13 665 1881  
marketing@btsteel.co.za  
www.btsteel.co.za

**Da Costa Construction Welding cc**

Representative: Tobie Oosthuizen  
Tel: +27 17 647 1130  
Fax: +27 17 647 6091  
tobie@dconstruction.co.za

**Quality Steel**

Representative: Andre D Potgieter  
Tel: +27 13 752 2723/4  
Fax: +27 13 752 2407  
andre@qualitysteel.co.za  
www.qualitysteel.co.za

**Steval Engineering (Pty) Ltd**

Representative: Victor Chrisholm  
Tel: +27 13 758 1015  
Fax: +27 13 758 1050  
victor@steval.co.za  
www.steval.co.za

**Tubular Technical Construct (Pty) Ltd**

Representative: Tony Trindade  
Tel: +27 13 690 2335  
Fax: +27 13 656 2408  
tony.t@tubular.co.za  
www.tubular.co.za

**North West****Motheo Steel Engineering**

Representative: Lesedi Molate  
Tel: +27 14 565 3482  
Fax: +27 14 565 3480  
reception@motheosteel.co.za

**Rutherfords**

Representative: Cecil Rutherford  
Tel: +27 18 293 3632  
Fax: +27 18 293 3634  
cecilr@rutherfords.co.za  
www.rutherfords.co.za

**Steel Services and Allied Industries**

Representative: Kevin Harris  
Tel: +27 18 788 6652/3  
Fax: +27 86 575 1790  
kevinh@steelservices.co.za  
www.steelservices.co.za

**Western Cape****Inenzo Water (Pty) Ltd**

Representative: Jan Cloete  
Tel: +27 21 948 6208  
Fax: +27 21 948 6210  
jcloete@inenzo.com  
www.inenzo.com

**Mazor Steel cc**

Representative: Shlomo Mazor  
Tel: +27 21 556 1555  
Fax: +27 21 556 1575  
judy@mazor.co.za  
www.mazor.co.za

**Prokon Services (Pty) Ltd**

Representative: Martin Lotz  
Tel: +27 21 905 4448  
Fax: +27 21 905 4449  
martin@prokonservices.co.za  
www.prokonservices.co.za

**Union Structural Engineering Works**

Representative: Mike N Papanicolaou  
Tel: +27 21 534 2251  
Fax: +27 21 534 6084  
michael@unionsteel.co.za  
www.unionsteel.co.za

**DEVELOPING / EMERGING CONTRACTORS****Four Tops Engineering Services cc**

Representative: Essau Motloung  
Tel: +27 72 229 9128  
Fax: +27 866 911 619  
fourtopseng@vodamail.co.za

**Maree Structural**

Representative: Johan Maree  
Tel: +27 82 458 5365  
Fax: +27 86 678 5876  
johan@maree.co.za  
www.maree.co.za

**Sach-Warr Construction cc**

Representative: Kesavan Moonsamy  
Tel: +27 83 283 6636  
Fax: +27 11 760 2595  
isaac@sachwarreng.co.za

**Zamani Engineering Services cc**

Representative: David Nkosi  
Tel: +27 13 656 1978  
Fax: +27 13 656 1979  
admin@zamaniengineering.co.za

**STEEL MERCHANTS & SERVICE CENTRES****Gauteng****Aveng Trident Steel (Pty) Ltd\***

Representative: Bob Harvey  
Tel: +27 11 861 7111  
Fax: +27 11 865 2042  
bob.harvey@trident.co.za  
www.avengtridentsteel.co.za

**BSI Steel Ltd\***

Representative: Vivienne Proudfoot  
Tel: +27 33 846 2222  
Fax: +27 33 846 2274  
viv.proudfoot@bsisteel.com  
www.bsisteel.com

**Clotan Steel\***

Representative: Danie Joubert  
Tel: +27 16 986 8000  
Fax: +27 16 986 8050  
daniej@clotansteel.co.za  
www.clotansteel.co.za

**Genesis Steel (Pty) Ltd\***

Representative: Eric MacDdonald  
Tel: +27 11 817 4008  
Fax: +27 865 304 152  
eric@genesisteel.co.za  
www.genesisteel.co.za

**Macsteel Service Centres SA (Pty) Ltd\***

Representative: Dave Dawkshas  
Tel: +27 11 871 0000  
Fax: +27 11 824 4994  
dave.dawkshas@macsteel.co.za  
www.macsteel.co.za

**Macsteel Trading Germiston South**

Representative: Granville Rolfe  
Tel: +27 11 871 4677  
Fax: +27 11 871 4667  
granville.rolfe@macstrading.co.za

**Macsteel VRN**

Representative: Jimmy Muir  
Tel: +27 11 861 5200  
Fax: +27 11 861 5203  
jimmy.muir@vrn.co.za  
www.vrnsteel.co.za

**NJR Steel Holdings (Pty) Ltd\***

Representative: Colin Chapman  
Tel: +27 11 477 5515  
Fax: +27 11 477 5550  
cchapman@njrsteel.co.za  
www.njrsteel.co.za

**Stewarts & Lloyds Trading (Pty) Ltd\***

Representative: Hermien De La Marie  
Tel: +27 11 553 8500  
Fax: +27 11 553 8510  
hermien@sltrading.co.za  
www.stewartsandlloyds.co.za

**KwaZulu-Natal****Macsteel Trading Durban**

Representative: Paul Simpson  
Tel: +27 31 913 2600  
Fax: +27 31 902 2345  
paul.simpson@macstrading.co.za

**Western Cape****Macsteel Trading Cape Town**

Representative: Maria Francis  
Tel: +27 21 950 5506  
Fax: +27 21 950 5600  
maria.francis@macstrading.co.za

**Transcape Steels (Pty) Ltd**

Representative: Carl van Rooyen  
Tel: +27 21 534 3211  
Fax: +27 21 534 5890  
carlvr@transcape.co.za  
www.transcapesteels.co.za

**STEEL PRODUCT MANUFACTURERS****Gauteng****Augusta Steel (Pty) Ltd\***

Representative: Nico Erasmus  
Tel: +27 11 914 4628  
Fax: +27 11 914 4748  
nico@augustasteel.co.za  
www.augustasteel.co.za

**Bolt & Engineering Distributors\***

Representative: Mike Giltrow  
Tel: +27 11 824 7500  
Fax: +27 11 824 0890  
mike@bolteng.co.za  
www.bolteng.co.za

**Cavotec Gantrex (Pty) Ltd Group\***

Representative: Kevin van der Merwe  
Tel: +27 11 963 0015  
Fax: +27 11 963 0064  
kevin.vandermerwe@cavotec.com  
www.cavotec.com

**CBC Fasteners (Pty) Ltd\***

Representative: Rob J. Pietersma  
Tel: +27 11 767 0000  
Fax: +27 11 767 0150  
rob@cbc.co.za  
www.cbc.co.za

**George Stott & Co (Pty) Ltd\***

Representative: Johan Venter  
Tel: +27 11 474 9150  
Fax: +27 11 474 8267  
johanv@geostott.co.za  
www.geostott.co.za

**Grating World (Pty) Ltd\***

Representative: George Whittle  
Tel: +27 11 452 1150/1/3  
Fax: +27 11 452 2536  
george@gratingworld.co.za  
www.gratingworld.co.za

**Horne Hydraulics (Pty) Ltd\***

Representative: Deon Sharp  
Tel: +27 11 974 1004  
Fax: +27 11 392 5650  
deons@horne-group.com  
www.horne.co.za

**Le Blanc Cih Lightning Structures (Pty) Ltd\***

Representative: William Brough  
Tel: +27 11 814 1404  
Fax: +27 11 814 1444  
rosstan@worldonline.co.za  
www.lightningstructures.co.za

**Macsteel Tube and Pipe\***

Representative: Peter Curr  
Tel: +27 11 897 2100  
Fax: +27 11 826 6333  
peter.curr@mactube.co.za

**Mentis Sales\***

Representative: Andrew Mentis  
Tel: +27 11 255 3200  
Fax: +27 11 828 1463  
andrew.mnt@mentis.co.za  
www.mentis.co.za

**MiTek Industries SA (Pty) Ltd\***

Representative: Stewart Murray  
Tel: +27 11 237 8700  
Fax: +27 86 644 4359  
smurray@mittek.co.za  
www.mitek.co.za

**Project Materials Southern****Africa (Pty) Ltd\***

Representative: Neil Myburgh  
Tel: +27 11 465 4247 or +27 79 898 2086  
Fax: +27 86 624 7970  
neil.myburgh@pmpiping.com

**Robor (Pty) Ltd\***

Representative: David van Staaden  
Tel: +27 11 977 2029  
davidvs@robor.co.za  
www.robor.co.za

**Robertson Ventilation International (RVI)\***

Representative: Eric Whelan  
Tel: +27 11 608 4640/1  
Fax: +27 11 608 6443  
erlcw@robventind.co.za  
www.robventind.co.za



# MEMBERSHIP

## Vital Engineering & Angus Mcleod (Pty) Ltd\*

Representative: Dodds B Pringle  
Tel: +27 11 898 8500  
Fax: +27 11 918 3000  
dodds@gratings.co.za  
www.gratings.co.za

## KwaZulu-Natal

### Safal Steel (Pty) Ltd\*

Representative: Tammy Grove  
Tel: +27 31 782 5500  
Fax: +27 31 782 1400  
marketing@safalsteel.co.za  
www.safalsteel.co.za

## Northern Cape

### Rufco Engineering\*

Representative: Gandeloro Ruffini  
Tel: +27 53 313 1651  
Fax: +27 53 313 2081  
info@rufco.co.za  
www.rufco.co.za

### Vonmeg Staalwerke\*

Representative: Niel Dippenaar  
Tel: +27 27 712 2606 or +27 82 808 4650  
Fax: +27 86 5809166  
niel@vonmeg.co.za

## North West

### Almec Manufacturing cc\*

Representative: Joan Basson  
Tel: +27 18 469 3202  
Fax: +27 18 469 3200  
joanalmecc@gds.co.za  
www.almeccmanufacturing.co.za

### PEL Construction\*

Representative: Ben Delpoit  
Tel: +27 18 469 3894  
Fax: +27 18 469 2783  
ben@pel.co.za

### WJ Engineering (Pty) Ltd\*

Representative: Bert J Werkman  
Tel: +27 18 294 3395  
Fax: +27 18 294 5472  
bwerkman@wjengineering.co.za  
www.wjengineering.co.za

## International

### Ficep SpA

Representative: Saku Järvinen  
Tel: +39 0332 876 111  
ficep@ficep.it  
www.ficepgroup.com

## DEVELOPING / EMERGING STEEL MERCHANTS

### Duvha Liswa (Pty) Ltd

Representative: Pinkie Mathaba  
Tel: +27 11 392-9860  
Fax: +27 86 525-1397  
pinkie@duvhaliswa.co.za  
www.duvhaliswa.co.za

## CORROSION & FIRE PROTECTION TO STEEL

### Gauteng

**Armco Galvanisers (Pty) Ltd**  
Representative: Dave Fensham  
Tel: +27 11 974 8511  
Fax: +27 11 974 8510  
mail@armco.co.za  
www.armco.co.za

### Bulldog Projects (Pty) Ltd

Representative: Mike Book  
Tel: +27 11 825 1070  
Fax: +27 11 825 7832  
mike@bulldogprojects.co.za  
www.bulldogprojects.co.za

## Hot Dip Galvanizers Association of SA

Representative: Terry Smith  
Tel: +27 21 797 4735  
terry@hdgasa.org.za  
www.hdgasa.org.za

### Pyro-Cote cc

Representative: Trevor Miller  
Tel: +27 11 864 5205  
Fax: +27 11 908 6636  
pyrocotejhb@pyrocote.co.za  
www.pyrocote.co.za

## CRANES

### Gauteng

#### RGM Cranes

Representative: John Ford  
Tel: +27 83 607 5303  
john@rgm.co.za

## CONSULTING ENGINEERS & PROJECT MANAGERS

### Gauteng

#### Acecad Software Ltd

Representative: Paul Marais  
Tel: +27 87 150 5556  
Fax: +27 86 552 5129  
p.marais@acecad.co.za  
www.acecadsoftware.com

#### AECOM SA (Pty) Ltd\*

Representative: Siyanda Ngebulana  
Tel: +27 12 421 3500  
Fax: +27 86 299 2137  
siyanda.ngebulana@aecom.com  
www.aecom.co.za

#### Anglo Operations Ltd

Representative: Alvin Masarira  
Tel: +27 11 638 2409  
Fax: +27 11 638 8809  
amasarira@anglotechnical.co.za

#### Aurecon South Africa (Pty) Ltd\*

Representative: Tomme Katranas  
Tel: +27 12 427 2470  
Fax: +27 86 607 7838  
Tomme.Katranas@af.aurecongroup.com  
www.aurecongroup.com

#### Arup (Pty) Ltd

Representative: Ric Snowden  
Tel: +27 11 218 7600  
Fax: +27 11 218 7876  
ric.snowden@arup.com  
www.arup.com

#### Bigen Africa Services (Pty) Ltd

Representative: Johann Human  
Tel: +27 12 842 8840  
Fax: +27 12 843 9000  
johann.human@bigenafrica.com  
www.bigenafrica.com

#### Clearspan Structures (Pty) Ltd

Representative: Jeff Montjoie  
Tel: +27 11 823 2402  
Fax: +27 11 823 2582  
jmo@clearspan.co.za  
www.clearspan.co.za

#### DRA Mineral Projects

Representative: Leon Uys  
Tel: +27 11 202 8600  
Fax: +27 11 202 8807  
luys@drasa.co.za  
www.drasa.co.za

#### Fluor SA (Pty) Ltd

Representative: Carlo Zambon  
Tel: +27 11 233 3400  
Fax: +27 11 233 3522  
carlo.zambon@fluor.com  
www.fluor.com

## FLSmith Roymec (Pty) Ltd

Representative: Stephan Kruger  
Tel: +27 10 210 4000  
Fax: +27 10 210 4050  
stephan.kruger@flsmith.com  
www.roymec.co.za

## Hatch Goba (Pty) Ltd

Representative: John Cowden  
Tel: +27 11 236 3300  
Fax: +27 11 807 8535  
johnc@goba.co.za  
www.goba.co.za

## Group Five Projects (Pty) Ltd

Representative: Caroline Combrink  
Tel: +27 11 899 4697  
Fax: +27 11 918 2902  
ccombrink@groupfive.co.za  
www.groupfive.co.za

## Hatch Africa (Pty) Ltd

Representative: Morne Fourie  
Tel: +27 11 239 5300  
Fax: +27 11 239 5790  
mfourie@hatch.co.za  
www.hatch.co.za

## Holley and Associates cc

Representative: David Haines  
Tel: +27 11 803 1159  
Fax: +27 11 803 0970  
david@holleyassociates.com  
www.holleyassociates.com

## Malani Padayachee and Associates (Pty) Ltd

(shortened version MPA (Pty) Ltd)  
Representative: Malani Padayachee-Saman  
Tel: +27 11 781 9710  
Fax: +27 11 781 9711  
admin@mpaconsulting.co.za  
www.mpaconsulting.co.za

## Marais Incorporated\*

Representative: Kobus Marais  
Tel: +27 82 904 4657  
maraisincorporated@gmail.com

## MDS NDT Consultants (Pty) Ltd

Representative: Shaun Green  
Tel: +27 11 615 7240  
Fax: +27 11 615 8913  
info@mds-skills.co.za  
www.mds-skills.co.za

## Pollock Williams James & Partners cc

Representative: Tim James  
Tel: +27 11 679 2282  
Fax: +27 11 679 384  
pwp@iafrica.com

## SH Services

Representative: Simon Du Toit  
Tel: +27 11 918 1991  
Fax: +27 11 918 1994  
shsccs@global.co.za

## Tenova TAKRAF Africa

A Division of Tenova Mining and Minerals (Pty) Ltd  
Representative: Gavin White  
Tel: +27 11 201 2400  
Fax: 086 677 1636  
gavin.white@bateman.com  
www.tenovagroup.com

## WAH Engineering Consultants cc

Representative: Graham Cross  
Tel: +27 11 888 2150  
Fax: +27 11 888 2296  
grahamc@waheng.co.za

## Worley Parsons TWP

Representative: Mushir Khan  
Tel: 086 TWP TWP (897 897)  
Fax: +27 11 218 3000  
mkhan@twp.co.za  
www.twp.co.za

## WSP Group Africa (Pty) Ltd

Representative: John Truter  
Tel: +27 11 300 6000  
Fax: +27 11 300 6001  
john.truter@wspgroup.co.za  
www.wspgroup.co.za

## KwaZulu-Natal

### Gavin R Brown & Associates

Representative: Gavin R Brown  
Tel: +27 31 202 5703  
Fax: +27 31 202 5708  
gavbrown@global.co.za  
www.gavbrown.co.za

## Young & Satharia Structural & Civil Engineering

Representative: Rob Young  
Tel: +27 31 207 7252  
Fax: +27 31 207 7259  
rob@yands.co.za  
www.yands.co.za

## Mpumalanga

### Hlakani Engineering Services (Pty) Ltd

Representative: Gerhard Holtshausen  
Tel: +27 13 246 1824  
Fax: +27 13 246 1835  
gerhard.holtshausen@hlakani.co.za  
www.hlakani.co.za

### Ijubane Projects (Pty) Ltd

Representative: Kobus Badenhorst  
Tel: +27 13 243 4390  
Fax: +27 13 243 5005  
kobus@glps.co.za  
www.glps.co.za

## Lategan Bouwer Civil & Structural Engineers

Representative: Anton Van Dyk  
Tel: +27 17 634 4150  
Fax: +27 17 634 4188  
avandyk@latbou.co.za  
www.latbou.co.za

## Western Cape

### By Design Consulting Engineers

Representative: Barend Oosthuizen  
Tel: +27 83 287 1995  
Fax: +27 86 547 1607  
barend@bydesign.org.za  
www.bydesign.org.za

### Bergstan South Africa

Representative: Alan Davies  
Tel: +27 21 487 4900  
Fax: +27 21 424 7657  
alan@bergstan.co.za  
www.engineer.co.za

### Kantey & Templer (Pty) Ltd

Representative: Chris Von Geusau  
Tel: +27 21 405-9600  
Fax: +27 21 419-6774  
chrivg@ct.kanteys.co.za  
www.kanteys.co.za

### Mondo Cane cc

Representative: Rob Chalmers  
Tel: +27 21 852 2447  
Fax: +27 21 852 2447  
rob@mondocane.co.za  
www.mondocane.co.za

### Scott Berg Partnership

Representative: Dave Scott  
Tel: +27 21 881 3142  
info@scottberg.co.za

### Vela VKE (Part of the SMEC Group)

Representative: John Anderson  
Tel: +27 21 417 2900  
Fax: +27 21 417 2999  
andersonj@velavke.co.za  
www.velavke.co.za

**Worley Parsons RSA (Pty) Ltd**  
Incorporating KV3 Engineers  
Representative: Corne Smith  
Tel: +27 21 912 3000  
Fax: +27 21 913 3222  
corne.smith@worleyparsons.com  
www.worleyparsons.com

#### CIVIL ENGR CONTRACTORS

**Basil Read (Pty) Ltd\***  
Representative: Eugene Du Toit  
Tel: +27 11 418 6300  
edutoit@basilread.co.za  
www.basilread.co.za

**Maccaferri SA (Pty) Ltd\***  
Representative: Adriano Gilli  
Tel: 087 742 2710  
Fax: 087 742 2735  
Adriano.gilli@maccaferri.co.za  
www.maccaferri.co.za

#### SUPPLIERS OF GOODS AND SERVICES TO THE INDUSTRY

**Austrian Welding Academy**  
**Bohler Uddeholm Africa (Pty) Ltd**  
Representative: Tom Rice  
Tel: +27 11 571 2390  
Fax: +27 866 233 632  
tom.r@bohler.co.za  
www.bohler.co.za

**Eazi Access Rental**  
Representative: Greg Bloom  
Tel: +27 83 460 7880  
Fax: +27 11 312 2318  
greg@eazi.co.za  
www.eazi.co.za

**First Cut (Pty) Ltd\***  
Representative: Steve Van Wyk  
Tel: +27 11 614 1112  
Fax: +27 11 614 1121  
stevev@firstcut.co.za  
www.firstcut.co.za

**Kaltenbach GmbH & Co**  
Representative: Simon Schlecht  
Tel: 0049 7621 175400  
Fax: 0049 7621 175900  
s.schlecht@kaltenbach.de  
www.kaltenbach.de

**Lindapter International**  
Representative: Michael Knight  
Tel: +44 (0) 1274 521444  
Fax: +44 (0) 1274 521330  
mknights@lindapter.com  
www.lindapter.com

**Peddinghaus Corporation of South Africa**  
Representative: Sandro Pereira  
Tel: +27 82 821 6974  
Fax: +27 86 524 0581  
patrick-pereira@peddinghaus.com  
www.peddinghaus.com

**Retecon (Pty) Ltd**  
Representative: Malcolm Moriarty  
Tel: +27 11 976 8600  
Fax: +27 11 394 2471  
malcolmm@retecon.co.za  
www.retecon.co.za

**Voortman**  
Supplier of CNC controlled machinery for the steel processing industry  
Tel: +31 548 53 63 73  
Fax: +31 548 53 63 74  
marketing@voortman.net  
www.voortman.net

#### POLASA

**Babcock Ntuthuko Powerlines**  
Representative: Gary Whalley  
Tel: +27 11 739 8240  
Fax: +27 11 739 8201  
gary.whalley@babcock.co.za  
www.babcock.co.za

**Megatron Federal a division of Ellies**  
Representative: Sava Savov  
Tel: +27 10 001 0202  
sava@megatronfederal.com  
www.megatronfederal.com

**TLE (Pty) Ltd**  
Representative: Cesare Di Giacomo  
Tel: +27 11 242 6611  
Fax: +27 11 242 6644  
adele@tle.za.net  
www.tle.za.net

#### SAMCRA MEMBERSHIP LIST

**Clotan Steel**  
Representative: Danie Joubert  
Tel: +27 16 986 8000  
Fax: +27 16 986 8050  
daniej@clotansteel.co.za  
www.clotansteel.co.za

**Global Roofing Solutions (Pty) Ltd\***  
Representative: Johan van der Westhuizen  
Tel: +27 11 898 2902  
Fax: +27 11 892 1455  
johan@globalroofs.co.za  
www.global-roofing-solutions.co.za

**Macsteel Roofing\***  
Representative: Dave Reid  
Tel: +27 11 878 7500  
Fax: +27 11 827 1890  
dave.reid@macroofing.co.za

**Safintra South Africa (Pty) Ltd\***  
Representative: Rainer Straussner  
Tel: +27 11 944 6800 / 0861 723 542  
Fax: +27 11 783 1128  
rainers@safrintra.co.za  
www.safintra.co.za

#### SASFA MEMBERSHIP LIST

##### MAJOR MATERIAL SUPPLIERS

**ArcelorMittal South Africa**  
Producer of steel  
Hannes Basson  
Tel: +27 16 889 3189  
hannes.basson@arcelormittal.com  
www.arcelormittal.com

**Everite Building Products (Pty) Ltd**  
Producer of fibre cement board  
Andrew de Klerk  
Tel: +27 11 439 4400  
Fax: +27 11 439 4933  
adeklerk@groupfive.co.za  
www.everite.co.za

**Lafarge Gypsum (Pty) Ltd**  
Producer of gypsum board  
Christo Newman  
Tel: +27 11 389 4500  
christo.newman@gypsum-za.lafarge.com

**Saint-Gobain Gyproc SA (Pty) Ltd**  
Producer of gypsum board  
Garry Powell  
Tel: +27 12 657 2800  
Garry.powell@saint-gobain.com  
www.gyproc.co.za

**Saint-Gobain Isover**  
Producer of insulation products  
Garry Powell  
Tel: +27 12 657 2800  
Garry.powell@saint-gobain.com  
www.isover.co.za

##### OTHER MATERIAL AND COMPONENT SUPPLIERS

**Avlock International**  
Fastener and equipment supplier  
Mohamed Khan  
Tel: +27 11 917 2110  
mohamed@avlock.co.za  
www.avlock.co.za

**Kare Industrial Suppliers**  
Distributor of fasteners  
Reitze Hylkema  
Tel: +27 11 941 3170  
reitze@kare.co.za  
www.kare.co.za

**Marshall Hinds**  
Distributor of Tyvek Building Wrap  
Denise Paul-Montanari  
+27 21 706 3496  
denisem@marshallhinds.co.za  
www.marshallhinds.co.za

**Simpson Strong-Tie South Africa (Pty) Ltd**  
Distributor of fasteners and bracketry  
Francois Basson  
Tel: +27 82 895 6513  
fbasson@strongtie.com  
www.strongtie.com

**Speedfit Africa**  
Distributor of John Guest Plumbing and associated technology solutions  
Gavin van Heusden  
Tel: +27 31 569 3073  
Fax: +27 31 569-3074  
info@speedfitafrika.co.za  
www.speedfitafrika.co.za

**United Fibre Cement Company**  
Distributor of fibre cement products  
Leon Bekker  
Tel: +27 21 933 0052  
leon@ufcc.co.za  
www.ufcc.co.za

##### LSFB MANUFACTURERS

**Allenby Housing cc**  
Planning, design, development & manufacture of modular building solutions  
Gonaseelan Govender  
Tel: +27 31 309 5561  
intercom@iafrica.com  
www.containerhouses.com

**Dezzo Roofing**  
Profiler and assembler  
Brandon Harding  
Tel: +27 31 713 6571  
brandon@dezzo.co.za  
www.dezzoroofing.co.za

**DURObuild (Pty) Ltd**  
Building material  
Clinton Johns  
Tel: +27 21 981 1460  
clinton@duroplastic.com  
www.kithomes.co.za

**Hazycrest Lightweight Steel Structures (Pty) Ltd**  
Large manufacturer  
Patrick Swanepoel  
Tel: +27 31 705 3640  
Fax: +27 31 705 2656  
patrick@hazycrest.co.za

**Innosteel (Pty) Ltd**  
Profiler and assembler  
Len Lategan  
Tel: +27 11 794 5436  
Fax: +27 11 794 2775  
info@innosteel.co.za

**Kusasa Commodities 148 (Pty) Ltd**  
Manufacture lightweight steel frame roof trusses and panels  
Hannes Venter  
Tel: +27 11 908 5255 or  
+27 81 313 7161  
hannes@kusasa-com.co.za  
www.kusasa-com.co.za

**Kwikspace Modular Buildings Ltd**  
Profiler and assembler  
Craig Harrison  
Tel: +27 11 617 8000  
craig@kwikspace.co.za  
www.kwikspace.co.za

**MiTek Industries South Africa (Pty) Ltd**  
LSF roof trusses, floors and panels  
Uwe Schluter  
Tel: +27 11 237 8700  
marketing@mittek.co.za  
www.mlii.com/southafrica

**Monl Frames (Pty) Ltd**  
LSFB systems & trusses  
Tshepo Mashigo  
Tel: +27 16 455 3344  
Fax: +27 16 455 3655  
tshepom@monlframes.co.za  
www.monlframes.co.za

**Razorbill Properties 127 (Pty) Ltd**  
Manufacturers and erectors of LSFB  
Vernon VD Westhuizen  
Tel: +27 16 423 1749/50  
vernon@razorb.co.za  
www.razorb.co.za

**SA Steelframe Systems**  
Profiler and assembler of LSF & trusses  
Johan Marais  
Tel: +27 82 450 0086  
johan@steelframe.co.za  
www.steelframe.co.za

**Siteform Framing**  
Profiler and assembler  
Johan Fourie  
Tel: +27 51 451 2166  
info@siteform.co.za

**Steel Frame Developments**  
Roll-forming and steel frame kits supplied  
Ryan Minietti  
Tel: +27 83 296 3078  
ryan@steelfd.co.za  
www.steelfd.co.za

**Tahzade Disaster Management**  
Manufacturer  
Rajan Harinarain  
Tel: +27 74 848 8881 or  
+27 83 492 3851  
tahzade@yahoo.com

**Trumod (Pty) Ltd**  
Manufacturer of light steel frames and trusses  
Mulder Kruger  
Tel: +27 11 363 1960  
mulder@trumod.co.za  
www.trumod.co.za

**Vela Steel Building Systems (Pty) Ltd**  
Profiler and assembler  
Brent Harris  
Tel: +27 11 397 8742  
Fax: +27 11 397-8879  
info@velasbs.co.za  
www.velasbs.co.za

##### SERVICE CENTRES AND DISTRIBUTORS

**ArcelorMittal Distribution Solutions South Africa**  
Technical solution for cladding, roofing and flooring  
Thierry Poitel  
Tel: +27 11 268 2561/+27 83 413-5798  
Thierry.poitel@arcelormittal.com  
www.arval-construction.com

**BlueScope Steel SA (Pty) Ltd**  
Wayne Miller  
Tel: +27 21 442 5420  
Fax: +27 21 448-9132  
Wayne.miller@bluescopesteel.com  
www.bluescopesteel.co.za



# MEMBERSHIP

## Clotan

Steel service centre  
Danie Joubert  
Tel: +27 16 986 8000  
danlej@clotansteel.co.za  
www.clotansteel.co.za

## Global Innovative Building Systems

Distributor of cladding and insulation materials  
Tammy Bywater  
Tel: +27 11 903 7080  
tammy@gissa.co.za  
www.gissa.co.za

## Global Specialised Systems KZN (Pty) Ltd

Distribute and manufacture insulations products and ducted air cons  
Carole Tomkinson  
Tel: +27 31 468 1234  
carole@globaldbn.co.za  
www.globalsystems.co.za

## Scottsdale

Distributor of LSFB equipment  
Steve Cullender  
Tel: +27 11 486 4195  
steve.cullender@scottsdalesteelframes.com  
www.scottsdalesteelframes.com

## DESIGN CONSULTANTS

### AMS Civil & Structural Consultants

Structural design engineer  
Anna-Marie Sassenberg  
Tel: +27 51 451 2510  
ams@ams-sa.co.za

### Bapedi Consulting Engineers

Structural engineers  
Boitumelo Kunutu  
Tel: +27 11 326 3227  
tumi@bapediconsult.co.za

### By Design Consulting Engineers

Structural engineer  
Barend Oosthuizen  
Tel: +27 21 883 3280  
barend@bydesign.org.za

### C-Plan Structural Engineers (Pty) Ltd

Structural engineer  
Cassie Grobler  
Tel: +27 11 472 4476  
cassie@cplan.co.za

### Hage Project and Consulting Engineers

Structural engineer  
Gert Visser  
Tel: +27 16 933 0195  
gert@hage.co.za

### Hull Consulting Engineers cc

Structural engineer  
Mike Hull  
Tel: +27 11 468 3447  
Fax: +27 86 6129671  
hull@iafrica.com

### Martin & Associates

Structural design engineer  
Ian Upton  
Tel: +27 31 266 0755  
ibu@martinjw.co.za

## ASSOCIATE MEMBERS

### AAAMSA Group

Promotion of fenestration, insulation and ceiling systems  
Hans Schefferlie  
Tel: +27 11 805 5002  
aaamsa@iafrica.com

### ABSA Bank

Joe Kondos  
Tel: +27 11 350 1045  
joeko@absa.co.za

## CSIR (Built Environment)

National building research institute  
Llewellyn Van Wyk  
Tel: +27 12 841 2677  
lvwyk@csir.co.za  
www.csir.co.za

## European Light Steel Construction Association (LSK)

www.easysteel.info

## HDGASA

Promotion of hot dip galvanized steel sheet  
Terry Smith  
Tel: +27 11 456 7960  
terry@hdgasa.org.za  
www.hdgasa.org.za

## IZASA

Promotion of the use of zinc  
Rob White  
Tel: +27 83 456 4989  
robwhite@icon.co.za  
www.izasa.org

## National Association of Steel-Framed Housing Inc New Zealand (NASH)

Carl Davies  
www.nashnz.org.nz

## National Association for Steel Framed Housing Australia (NASH)

Ken Watson  
www.nash.asn.au

## Pretoria Institute for Architecture

Institute for architects  
Maureen Van Wyk  
Tel: +27 12 341 3204  
admin.pia@saia.org.za  
www.saia.org.za

## Standard Bank

Provider of home loans  
Johann Strydom  
Tel: +27 11 631 5977  
Johanjj.strydom@standardbank.co.za

## Steel Framing Alliance (USA)

Mark Nowak  
www.steelframingalliance.com

## University of Cape Town

Dept of Civil Engineering  
Educational  
Sebastian Skatulla  
Tel: +27 21 650 2595  
sebastian.skatulla@uct.ac.za

## University of Pretoria Faculty of Engineering

Educational  
Riaan Jansen  
Tel: +27 12 420 4111  
riaan.jansen@up.ac.za

## University of the Witwatersrand

School of Mechanical Engineering  
Educational  
Kamil Midor  
Tel: +27 11 717 7358  
Kamil.midor@wits.ac.za

## BUILDING INDUSTRY

### Abafana Construction

Building of schools, clinics, housing  
Daniel Snyman  
Tel: +27 82 857 8643/  
+27 31 467 2141  
annette.snyman@live.com

### Abbeycon (Pty) Ltd

Ceiling, partitions and commercial refurbishment  
Carlos Pinho  
Tel: +27 11 823 2950  
carlos@abbeycon.co.za  
www.abbeycon.co.za

## Brainwave Projects 126 cc

Builder of LSFB  
Thami Khanyile  
Tel: +27 31 267 2468  
thami@stedonehazycrest.co.za

## Group Five Housing (Pty) Ltd

Developer and builder  
Paul Thiel  
Tel: +27 11 253 8833  
pthiel@groupfive.co.za

## Halifax Projects

Supply and fit of LSFB systems  
Robert Meyer  
Tel: +27 82 843 5457  
pretoria@silverlinegroup.co.za

## Hazycrest Construction

Erector and builder  
Patrick Swanepoel  
Tel: +27 31 705 2710  
Fax: +27 31 705 2656  
patrick@hazycrest.co.za

## Lakeshore Trading 102 cc

Construction and training  
Linky Delisle  
Tel: +27 31 706 3695  
deli@lakeshore.co.za

## Midfix

Residential LSFB  
Peet Joubert  
Tel: +27 82 934 2294  
peet@midfix.co.za

## Legna Creative Enterprises cc

Erector and builder  
Angel Mazubane  
Tel: +27 31 563 1371  
angel@legnacreative.co.za  
www.legnacreative.co.za

## RH Construction (Pty) Ltd

Building and Construction  
Rajan Harinarain  
Tel: +27 74 184 8881  
tahzade@yahoo.com

## Shospec (Pty) Ltd

LSFB builder, ceilings, partitions, turn-key projects  
Bjorn Kahler  
Tel: +27 33 386 0100  
bjorn@shospec.co.za  
www.shospec.co.za

## Sidepoint Trading 97 cc

Construction & alternative building  
Thamsanqa Sibisi  
Tel: +27 73 897 1881  
percysibisi@vodamail.co.za

## Silverline Group

Developer and builder of LSFB  
Charl van Zyl  
Tel: +27 21 933 0052  
charl@silverlinegroup.co.za

## Steel Frame Projects

Builder of steel frame homes and trusses  
Johan Venter  
Tel: +27 74 128 1840  
johan@steelframeprojects.co.za  
www.steelframeprojects.co.za

## Trion Investments (Pty) Ltd

Developer and construction  
Deon Vos  
Tel: +27 82 555 0057  
trion@vodamail.co.za

## Zeranza 155

General building  
Nellie Ndlela  
Tel: +27 33 347 0031  
Zeranza155pty@yahoo.com

\* ALSO A MEMBER OF



## SAISC HONORARY MEMBERS

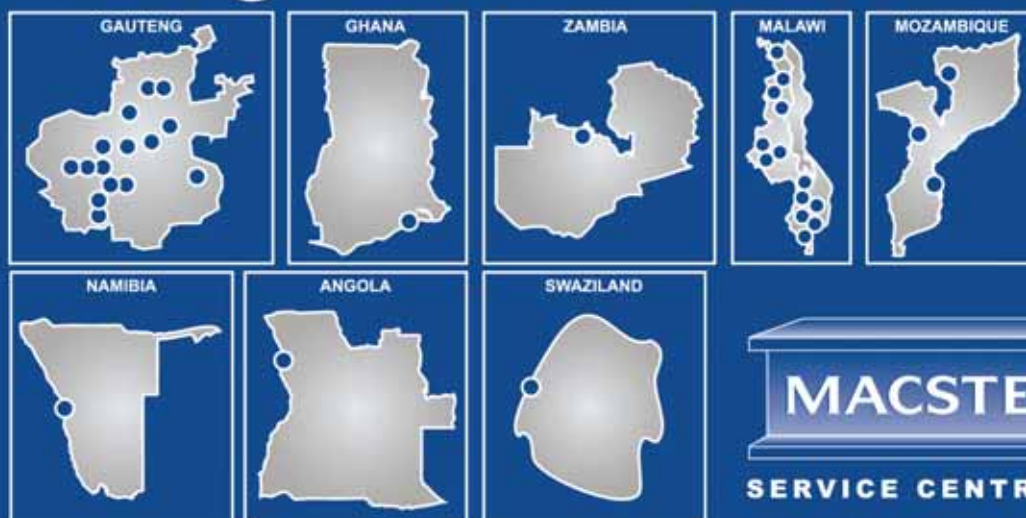
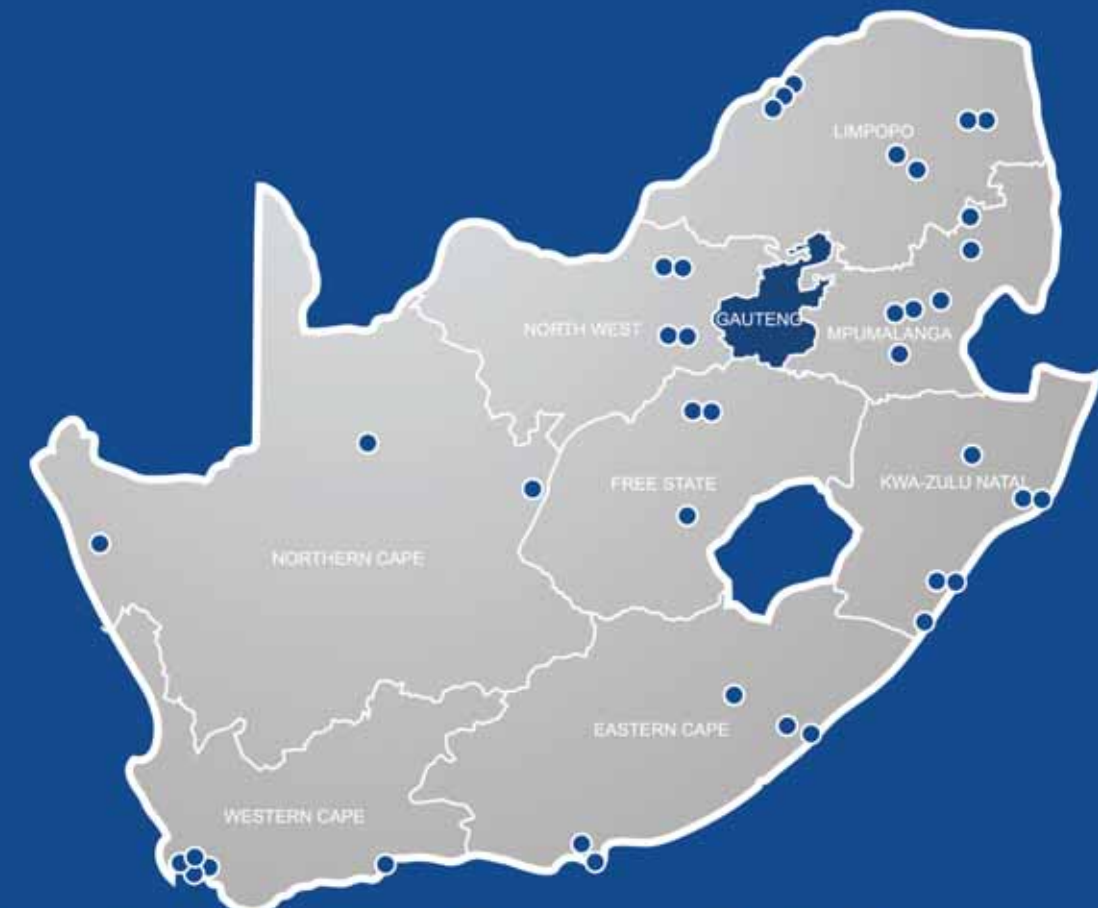
Cyril Herr  
Dick Griffioen  
Don Walker  
DA Walker & Associates  
Eric Samson  
Macsteel Service Centres SA (Pty) Ltd  
Ernie Behr  
Geoff Krige  
WAH Engineering Consultants cc  
Gwilliam Bodill  
Hennie de Clercq  
SAISC  
Hennie Esterhuizen  
Group Five Projects (Pty) Ltd  
Jeff Chegwidan  
John Barnard  
SASFA  
John Swallow  
J W Swallow & Associates  
John van Rensburg  
Kobus de Beer  
SAISC  
Louis Breckenridge  
Constructional Engineering Association  
Rob Young  
Young & Satharia Structural & Civil Engineers  
Sigi Holtzhausen  
WAH Engineering Consultants cc  
Spencer Erling  
SAISC  
Trevor Geach

# MACSTEEL

## Africa's leading steel supplier

Offering you the most comprehensive range of steel products and value added processing services

Aluminium  
Blanking  
Bright Bar  
Castellated Beams  
Cellular Beams  
Cold Form Sections  
Cold Saw Cutting  
Conveyance Pipe  
Corrugated Roofing  
Drilling  
Expanded Metal  
Fencing Products  
Flame Cutting  
Flanges  
Fluid Control Systems  
Freestock  
Galvanized Sheets  
Galvanized Tubing  
Grating  
Guillotining  
Harveytiles  
Heat Treatment Services  
High Strength Steels  
Hollow Bar  
IBR Roofing  
Laboratory Services  
Laser Cutting  
Laser Cut Tubing  
Lipped Channels  
Open Sections  
Palisade Fencing  
Pipe Fittings  
Plasma Cutting  
Plates  
Plate Bending & Rolling  
Pre-coated Sheets  
Pressure Vessel Steels  
Profile Sections  
Purlins  
Rails  
Reinforcing  
Roofing Solutions  
Sheets  
Slitting  
Special Steels  
Stainless Steels  
Stretcher Leveling  
Structural Steels  
Technical Consultancy  
Tool Steels  
Tubing  
Valves & Actuators  
Wear Resistant Steels  
Zincalume Roof Sheets







## Heavy steel fabrication and erection contractors.

Steel Services supply light, medium and heavy engineering steel solutions to the construction and mining industry, designers and architects. Whether it is a shopping center or steel work for a mine shaft, we've earned a reputation for expertise and excellence in service (with Steel Awards to prove it).



**Steel Services**  
AND ALLIED INDUSTRIES

[www.steelservices.co.za](http://www.steelservices.co.za)

Email: [lawrenceb@steelservices.co.za](mailto:lawrenceb@steelservices.co.za)

Tel +27 (0) 18 787 2059 | +27 (0) 18 787 2083

